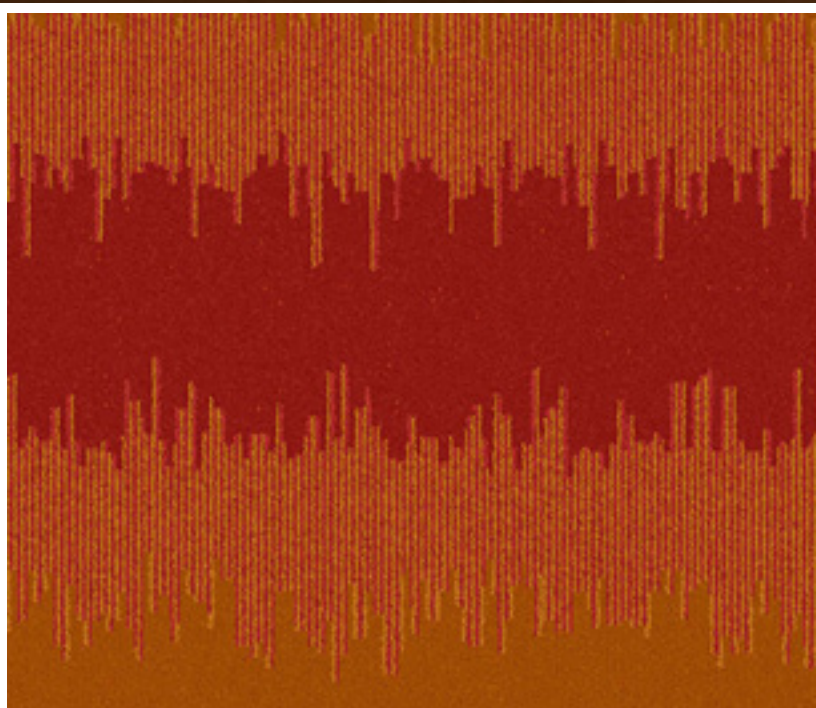
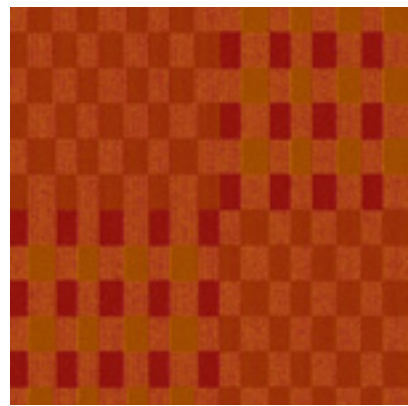


GLOBAL REASON



GLOBAL REASON

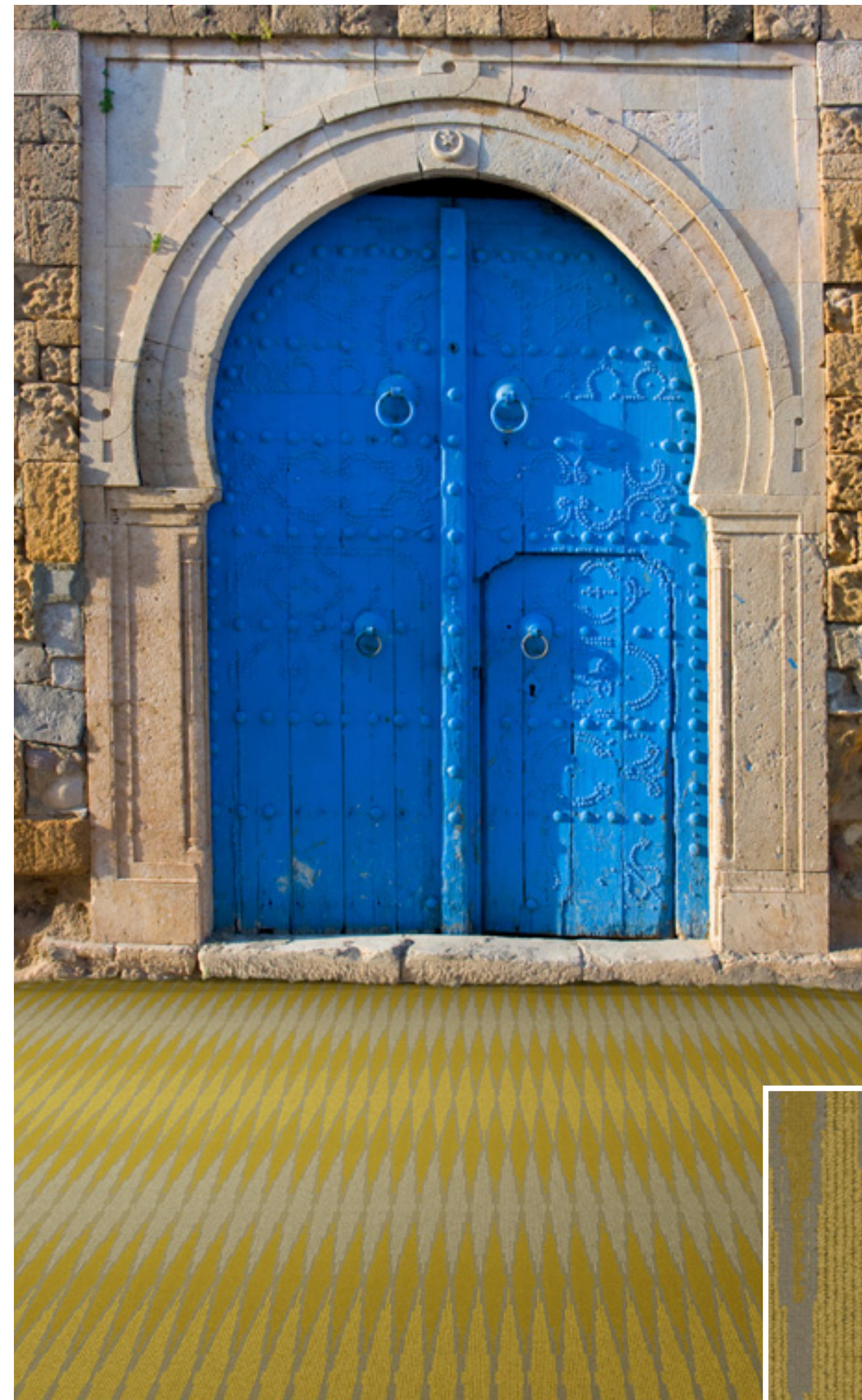
The language of design is elegance at every beautifully traveled turn.

Take a journey; wander the world. Soak in the rhythms and flavors of a globally diverse marketplace where cultures and traditions intersect.

Inspired by the centuries-old art of block printing, our design team retooled traditional techniques to revive this ancient craft.

The result: a sustainable carpet collection where updated geometrics, mixed motifs, and graphic compositions exude a culturally eclectic feel.

Your doorway to the world awaits; journey to the other side and revel in the beauty of Global Reason.



y4647

pattern repeat:
12" W x 48" L



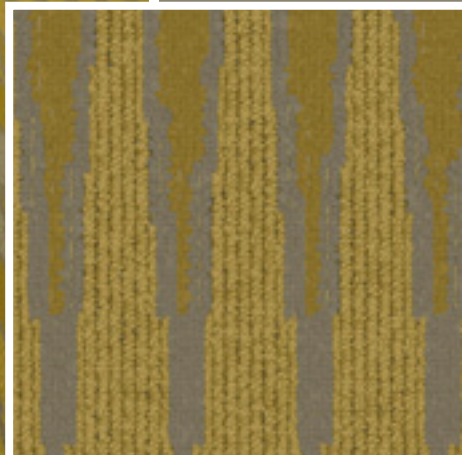
A

5650D



B

5726D



y4567

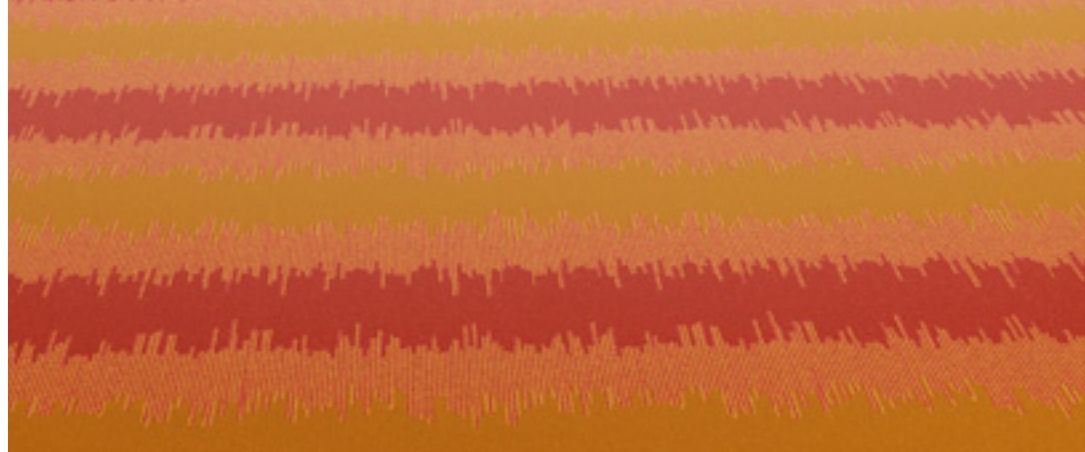
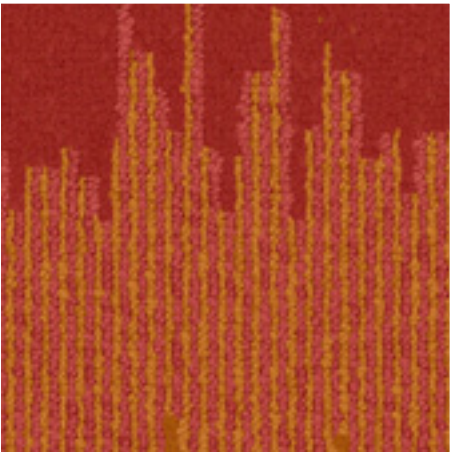
pattern repeat:
24" W x 24" L



5808D



5796D



y4565

pattern repeat:
24" W x 24" L



5223D



6030

y4687

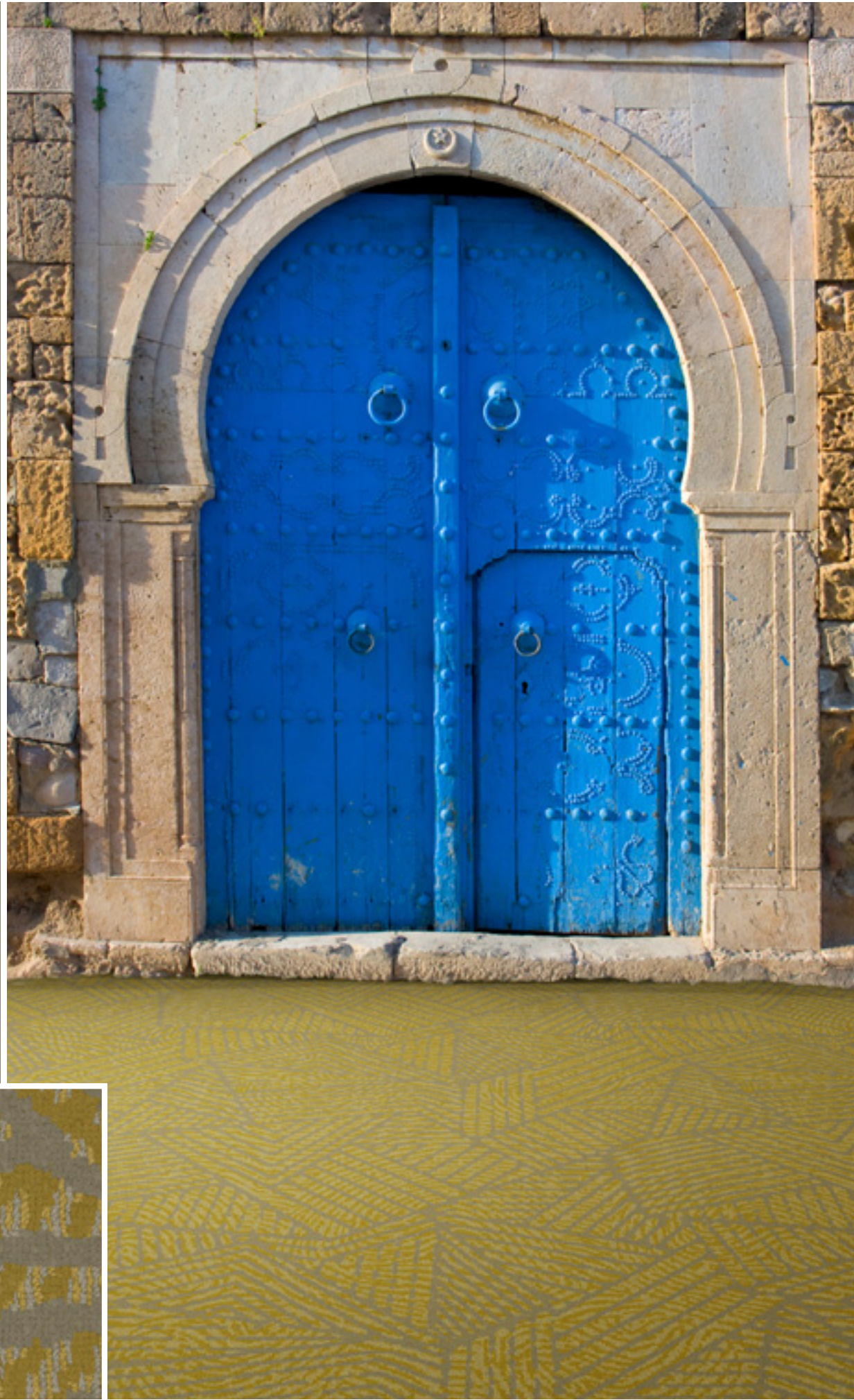
pattern repeat:
48" W x 48" L

A

5650D

B

5726D



y4654

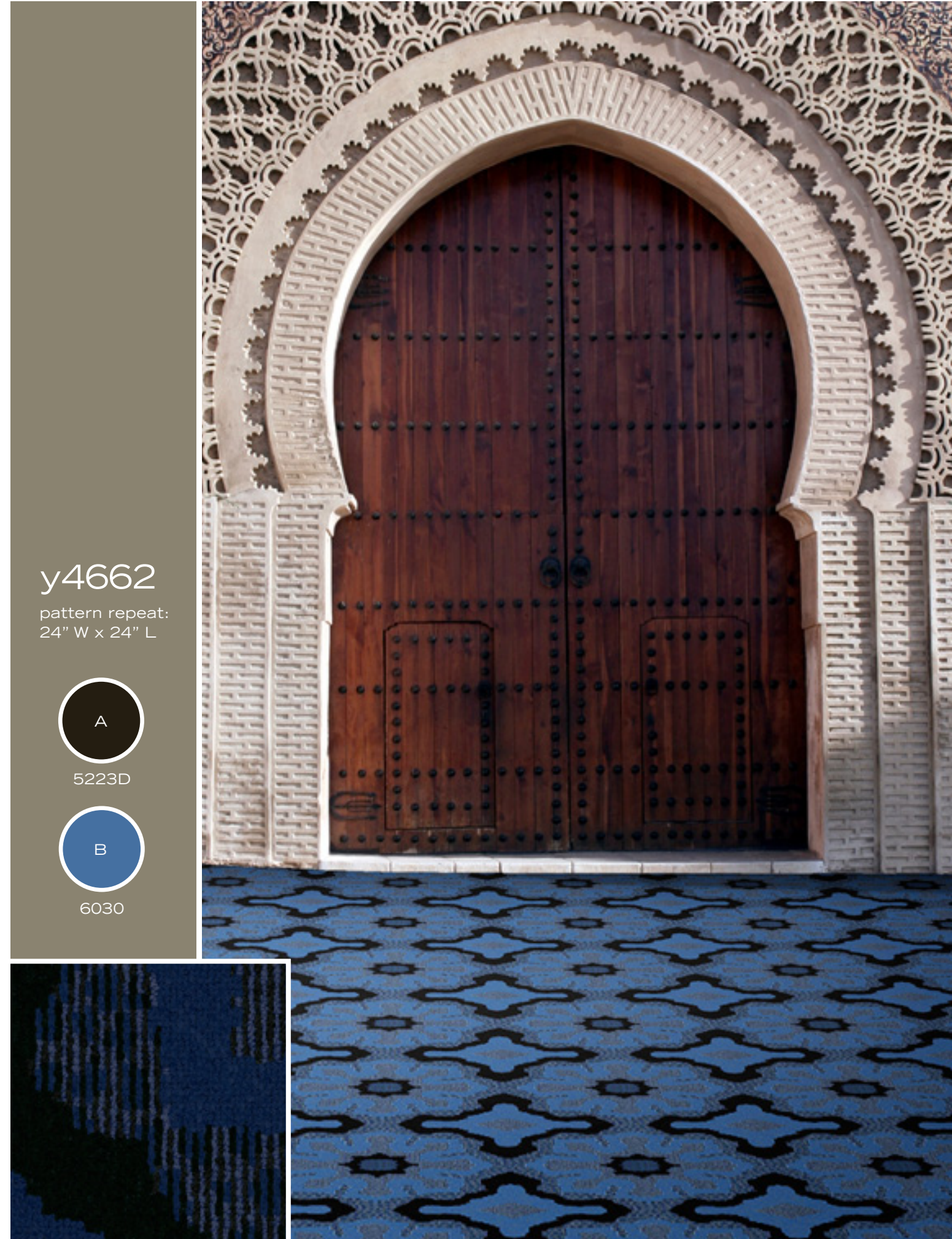
pattern repeat:
24" W x 24" L

A

5808D

B

5796D



y4662

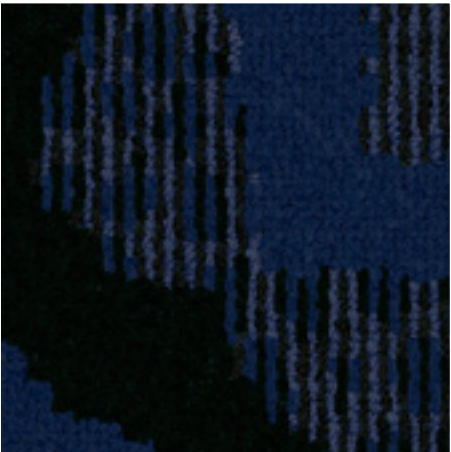
pattern repeat:
24" W x 24" L



5223D



6030



y4685

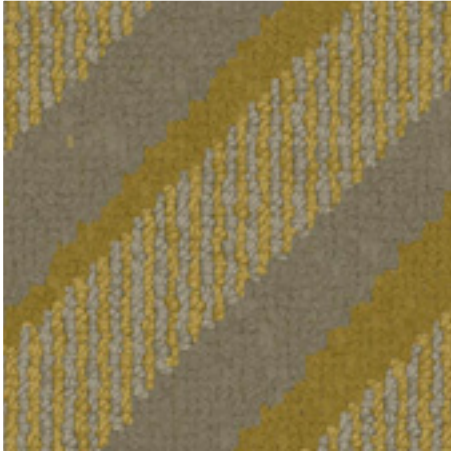
pattern repeat:
48" W x 24" L

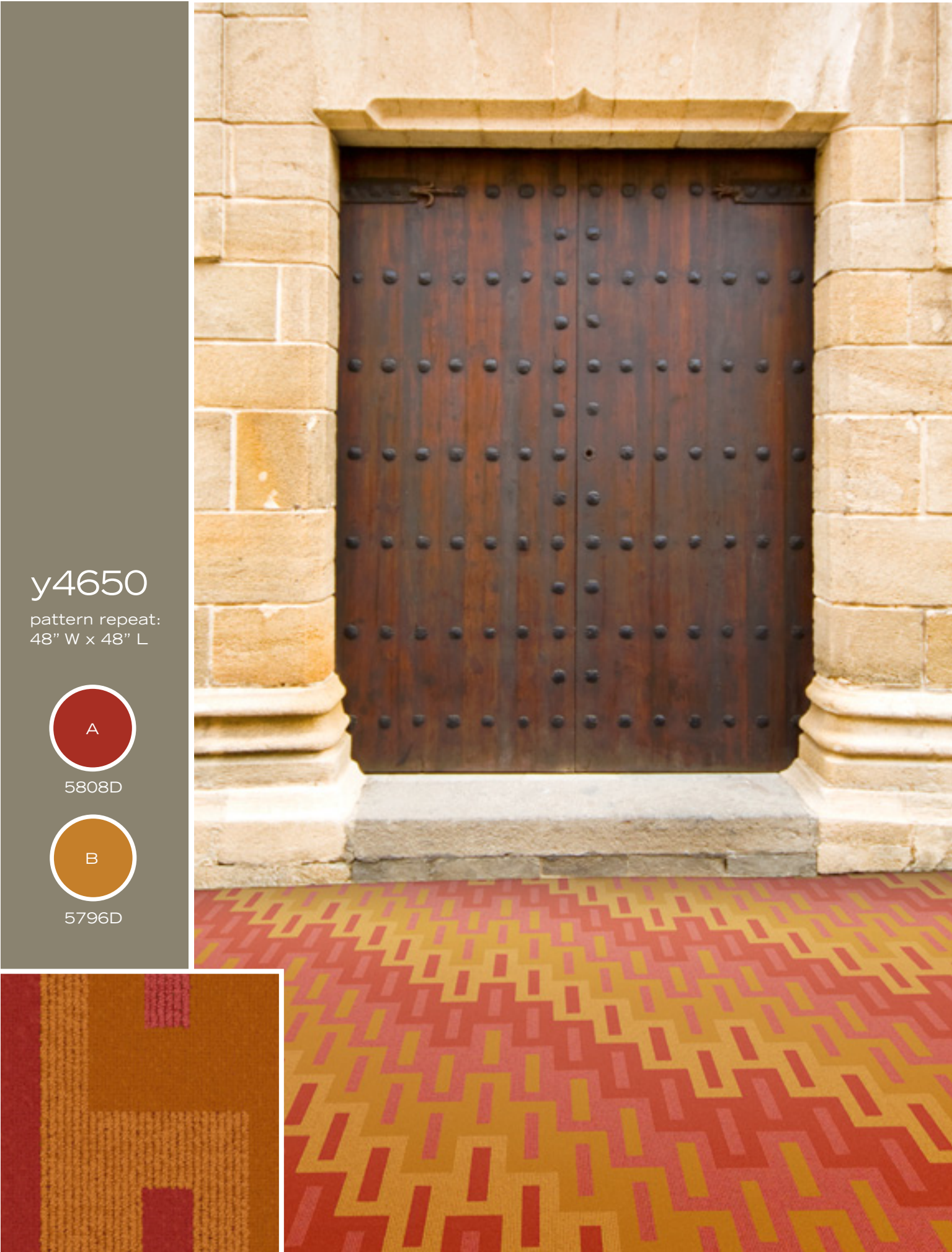


5650D



5726D





y4650

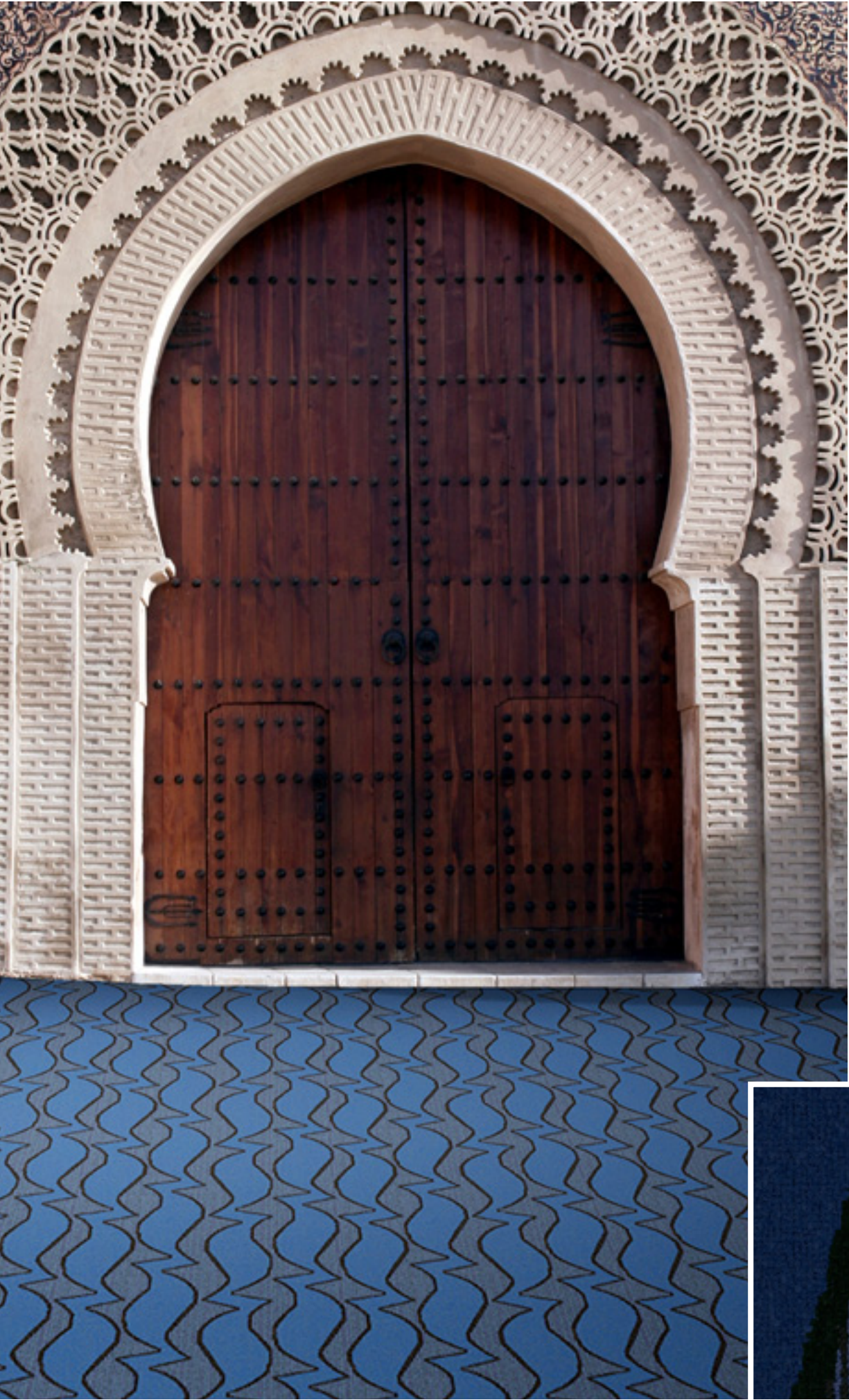
pattern repeat:
48" W x 48" L



5808D



5796D



y4652

pattern repeat:
24" W x 24" L

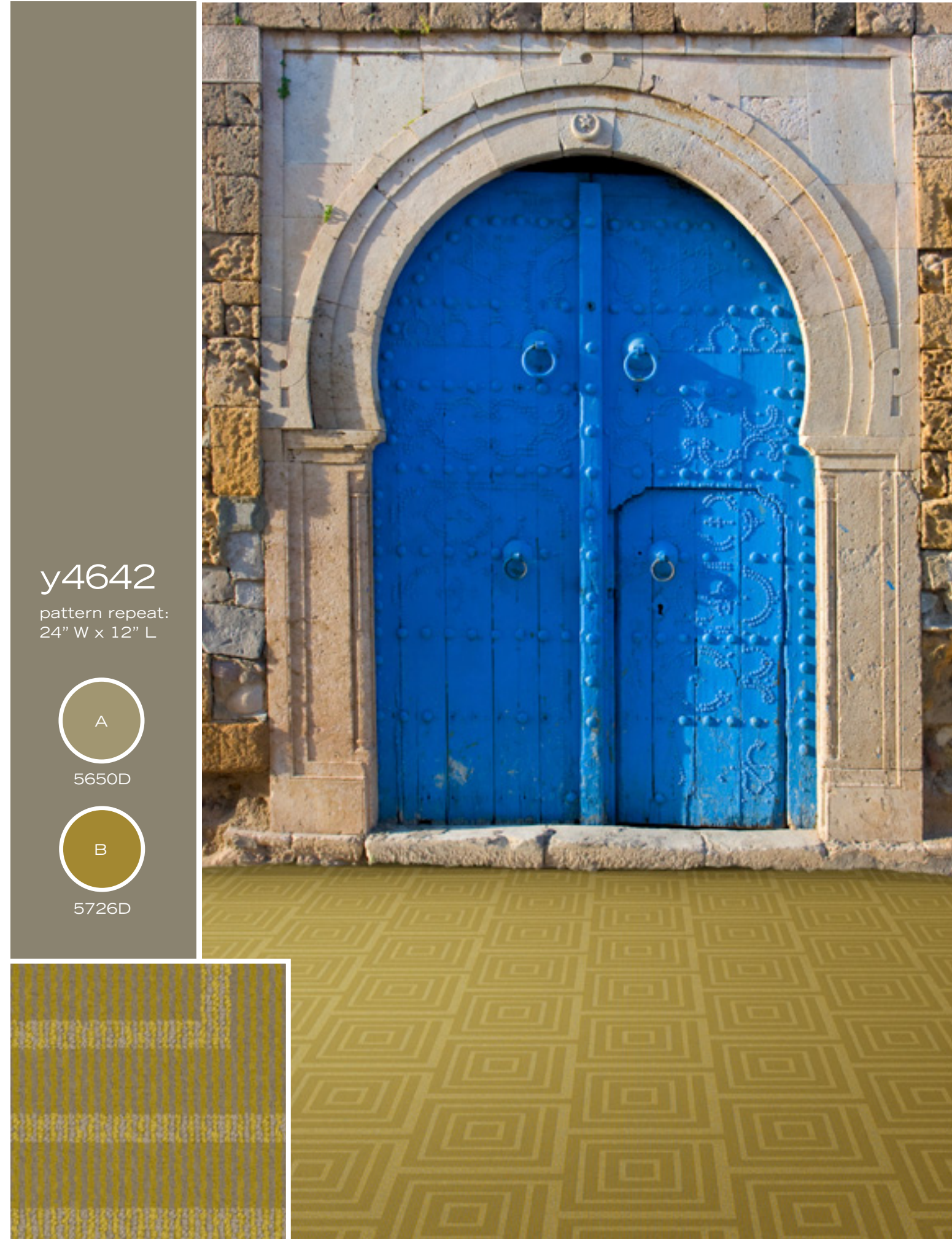


5223D



6030





y4642

pattern repeat:
24" W x 12" L



5650D



5726D



y4659

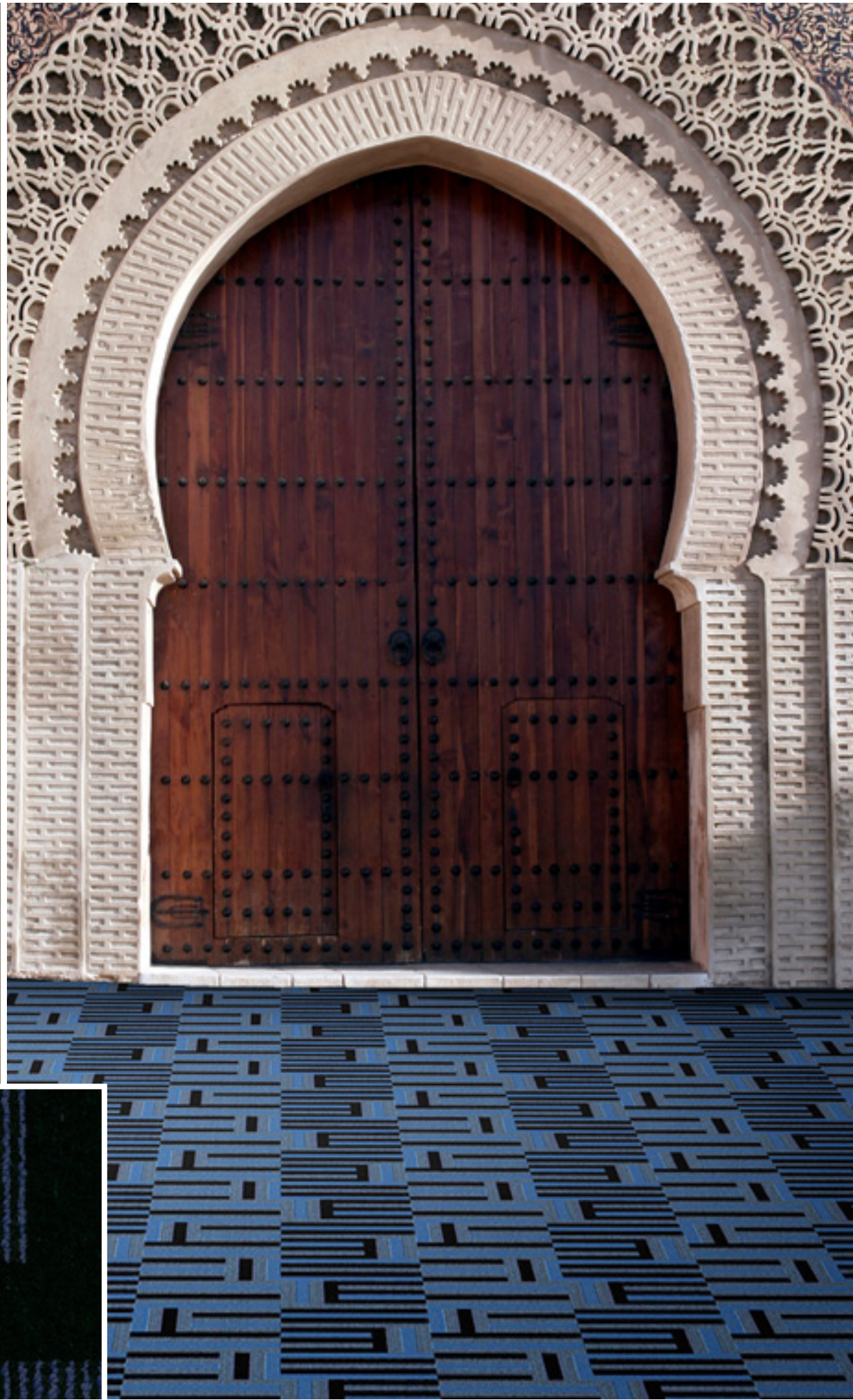
pattern repeat:
48" W x 48" L



5808D



5796D



y4657

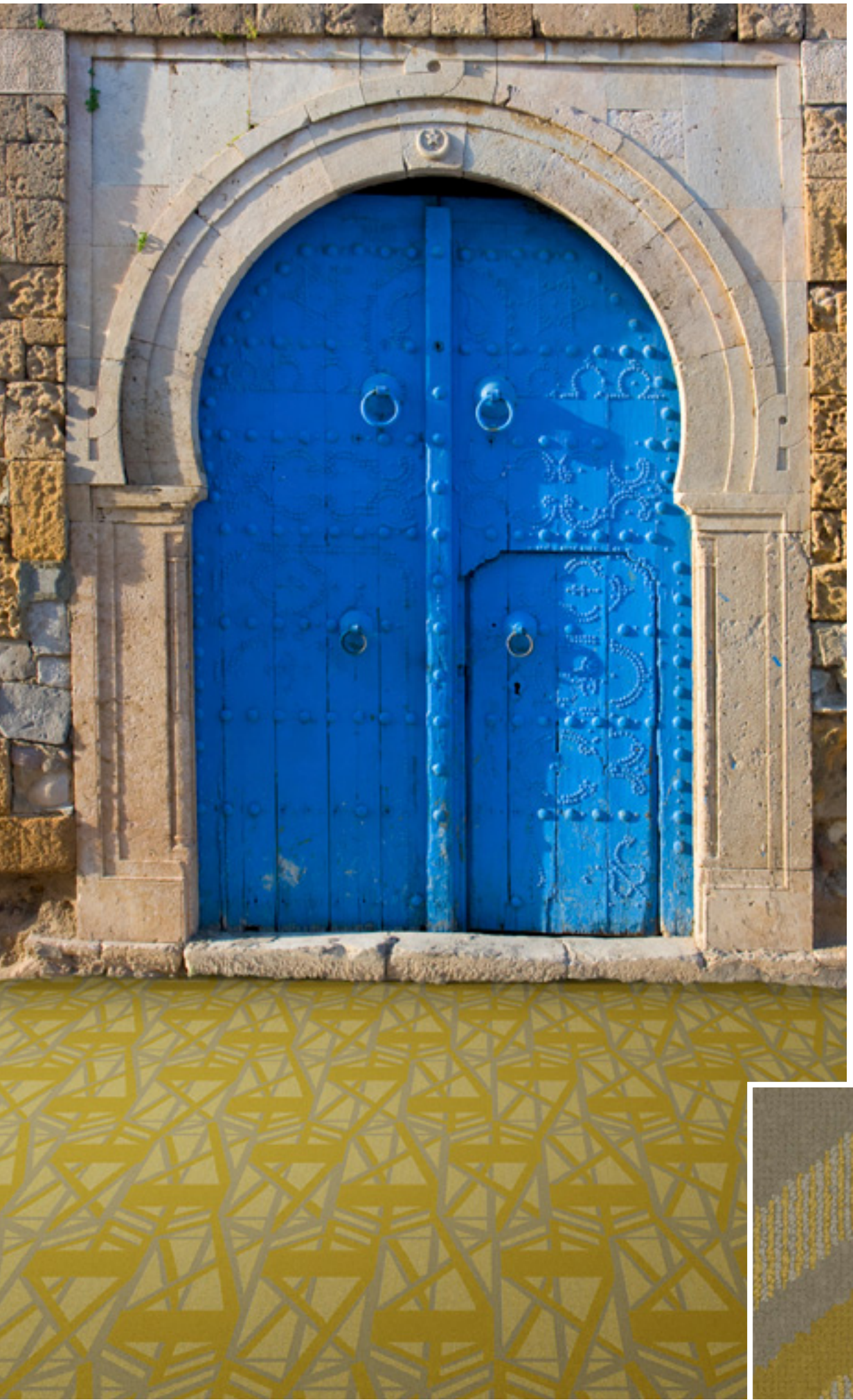
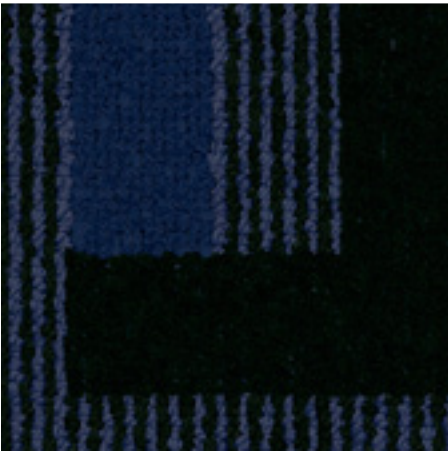
pattern repeat:
24" W x 24" L



5223D



6030



y4648

pattern repeat:
24" W x 58" L



5650D



5726D



y4653

pattern repeat:
12" W x 12" L



5808D



5796D



y4660

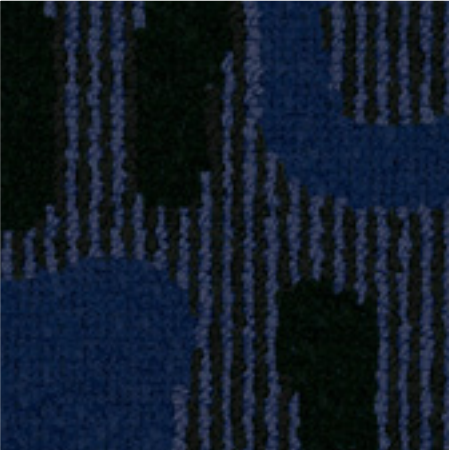
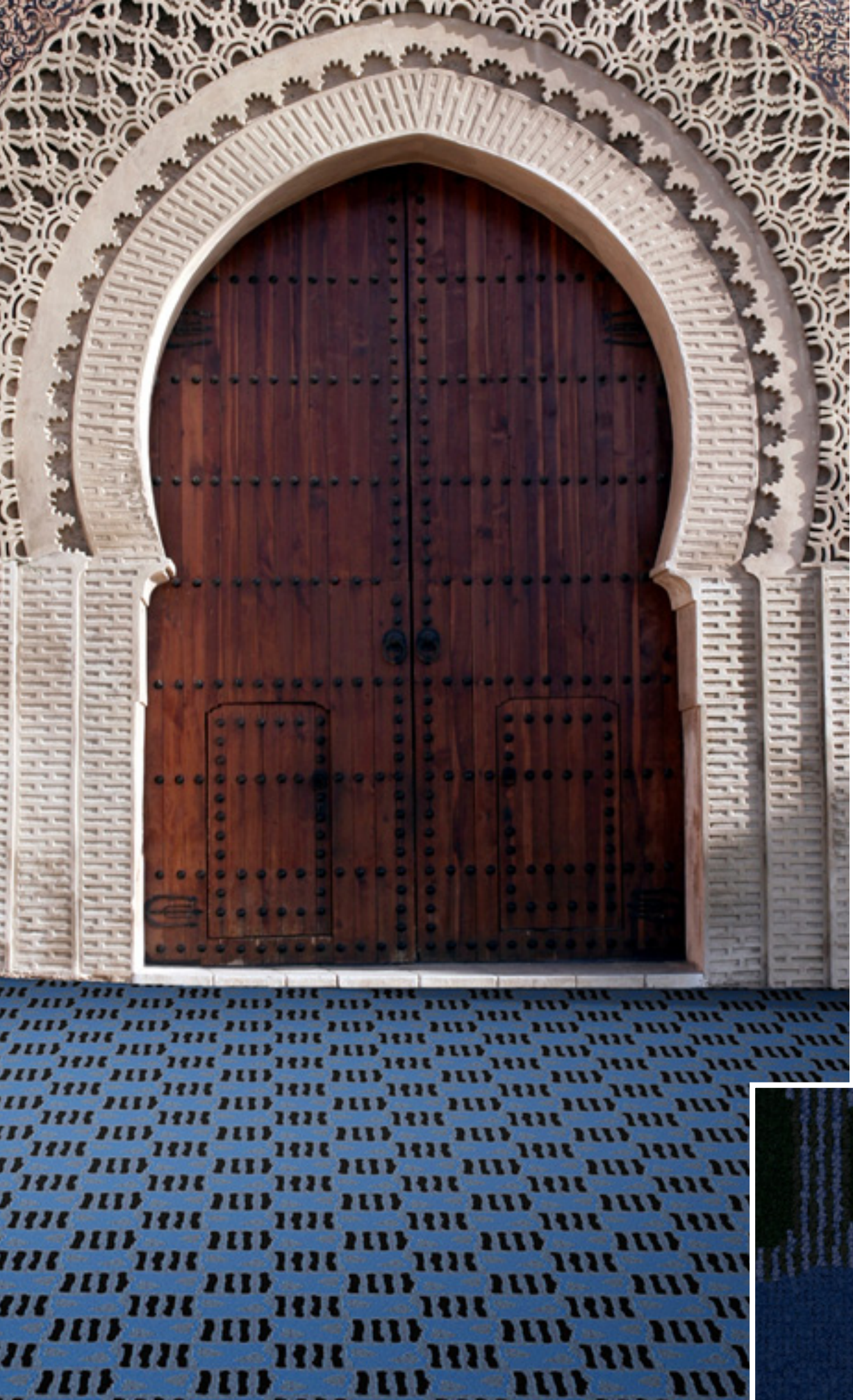
pattern repeat:
12" W x 12" L



5223D



6030



y4644

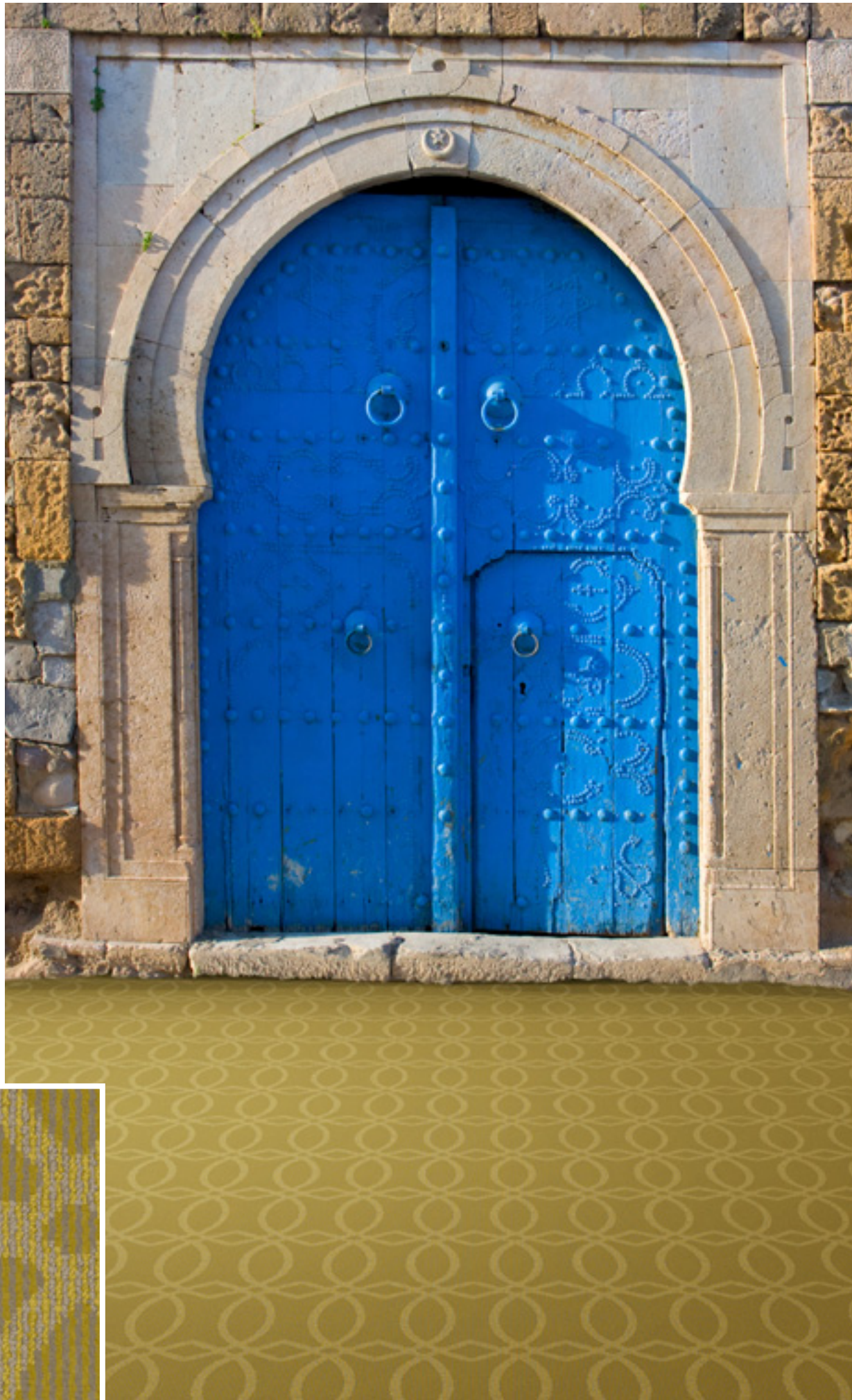
pattern repeat:
12" W x 16" L



5650D



5726D



GLOBAL REASON

specifications

application:	guest rooms
description:	multi-level cut and loop
fiber type:	100% Eco Solution Q® Premium Branded SD Nylon
dye method:	solution dyed
gauge:	1/10"
stitches per inch:	10.8
tufted pile height:	.220"
production weight:	32 oz./sq. yd.*
density:	5,236 oz./yd.
weight density:	167,552
protective treatments:	SRS Stain Resistance System
secondary backing:	ClassicBac™
available widths:	12', 13' 6", and 15'

***Specifications available in public space face weights of 34 oz. to 36 oz.**
Specifications are subject to normal manufacturing tolerances.

Flooring Radiant Panel (ASTM E-648): Class I	Smoke Density (ASTM E-662): Less than 450
Electrostatic Propensity: Less than 3.5 KV	Warranty: Lifetime Limited Commercial Lifetime Limited Stain

ADA Compliance:
This product meets the Guidelines as Set Forth in the Americans with Disabilities Act for Minimum Static Coefficient of Friction for 0.6 for Accessible Routes.

environmental:

- MBDC Cradle to Cradle certified
- 100% sustainable through the Shaw Green Edge® Recycling Program
- contains a minimum of 25% pre-consumer recycled content
- contributes to LEED point rating system for recycled content, low emitting materials and innovation in design
- Green Label Plus Certified



After its useful life, this product can be recycled again and again by calling 877.502.SHAW (7429).

eco*solution Q®

