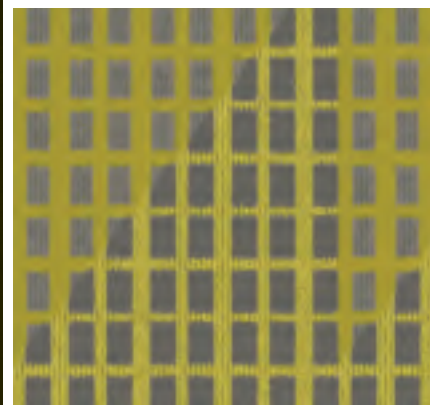


FACTORY



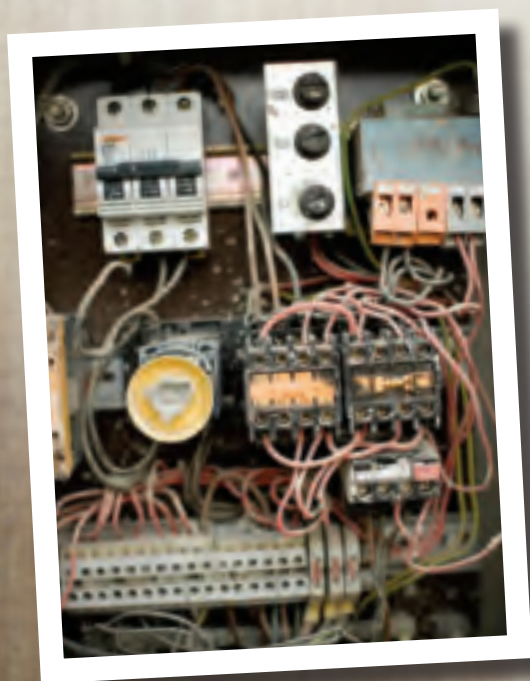
shaw | HOSPITALITY GROUP™
the language of design

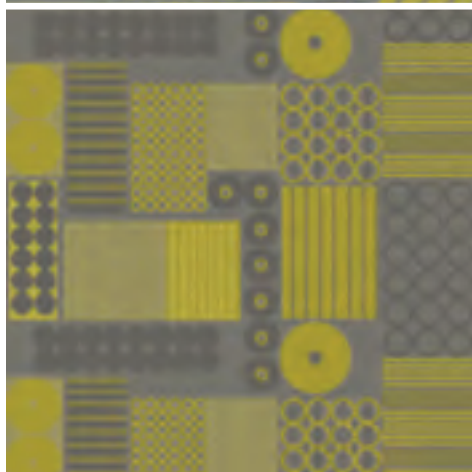
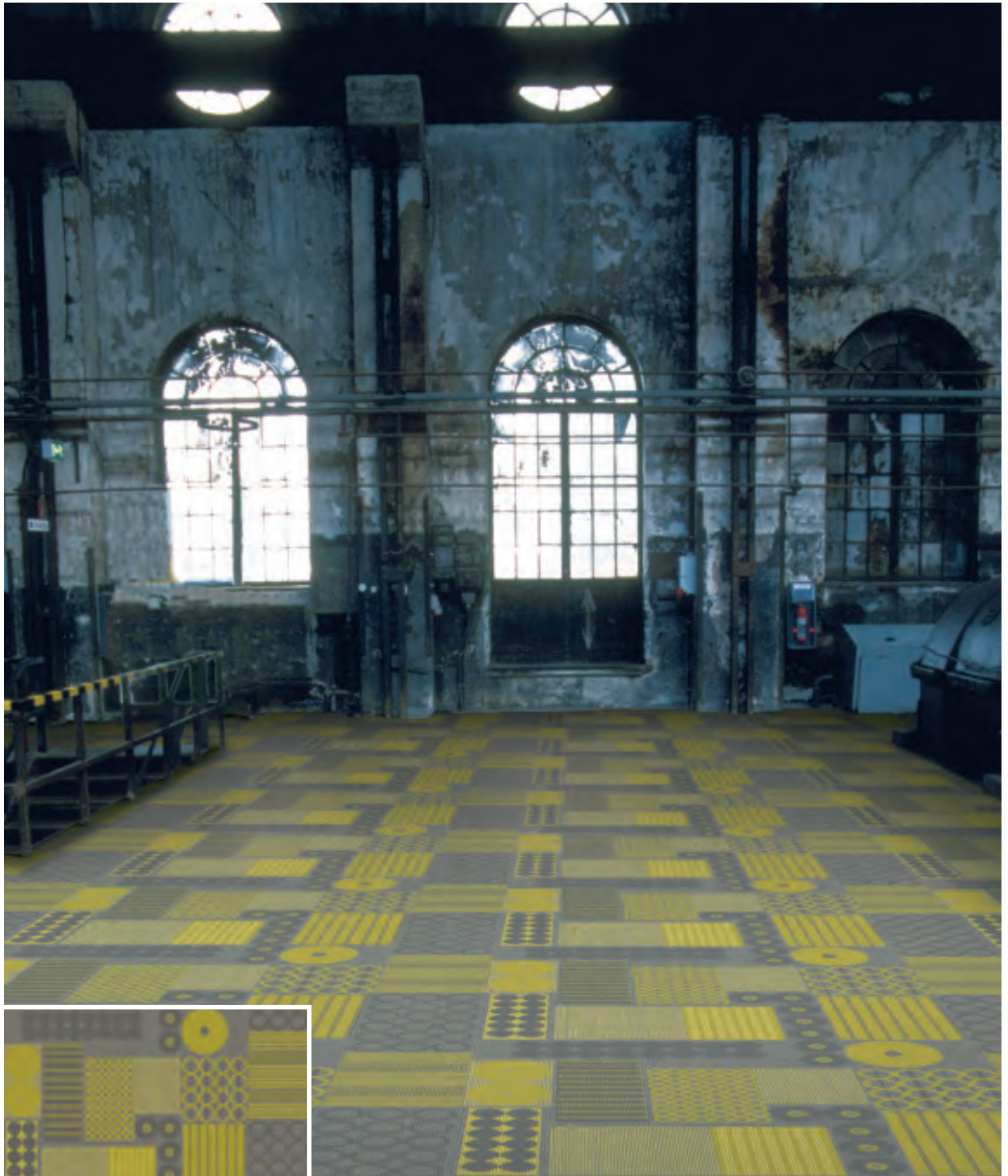
FACTORY

The Museum of Modern Art illustrated the allure of industrially manufactured objects during its 1934 exhibit “Machine Art” organized by architect Phillip Johnson. This exhibition, which recognized the raw beauty in objects created without artistic intention, overlapped commerce and culture while promoting a resurgence of capitalism and cooperation between designers and manufacturers.

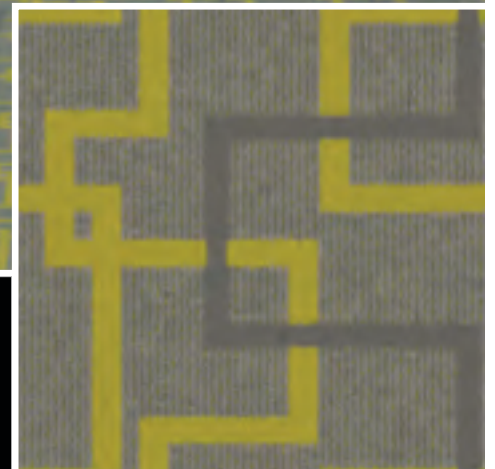
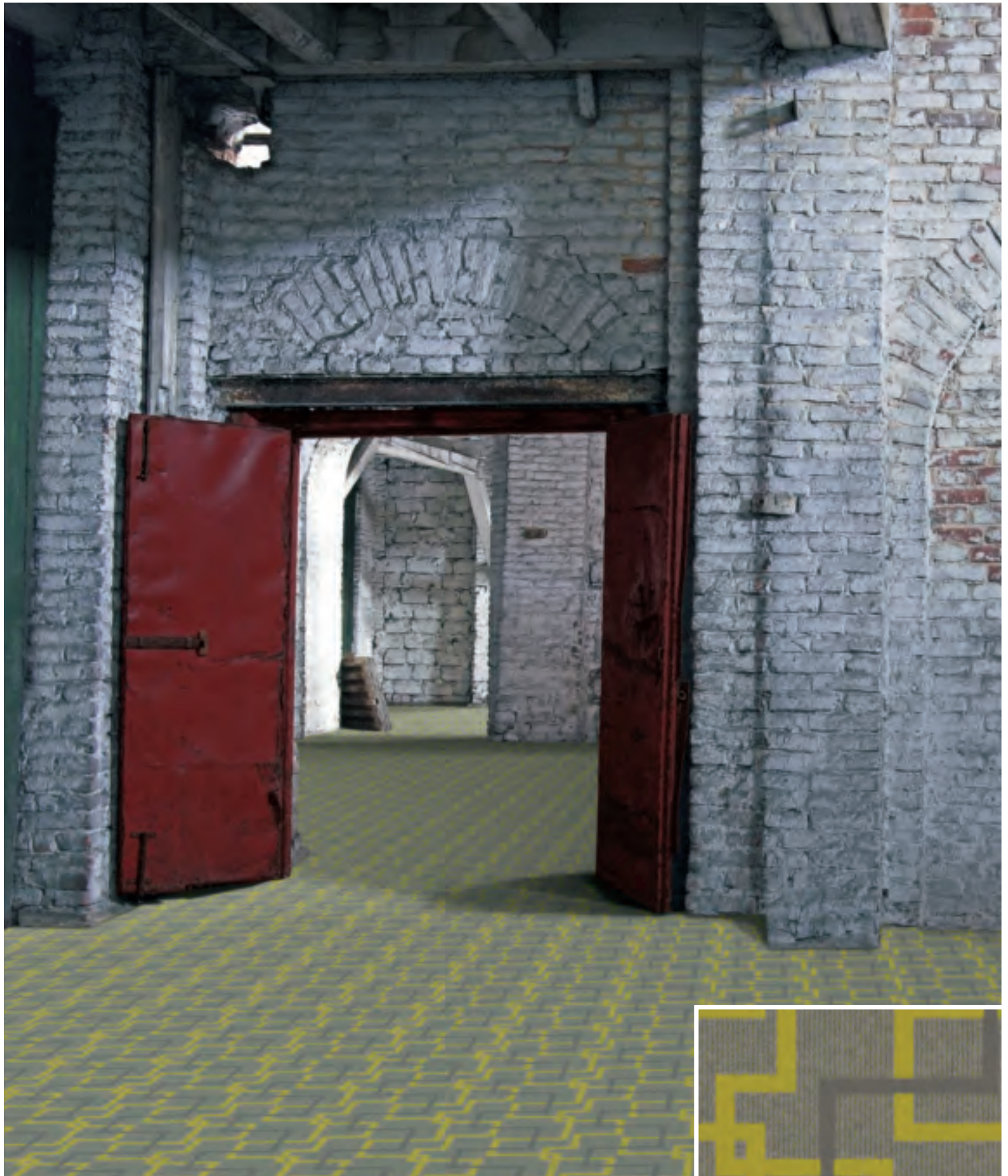
Intrigued by the “Machine Art” exhibit, members of the Shaw Hospitality Group Design Studio toured manufacturing plants and industrial buildings and uncovered the artistic beauty in common machinery. Award winning Design Studio manager Pamela Rainey used her imaginative eye and began photographing and sketching designs which transpired into Shaw Hospitality Group’s latest tufted carpet collection, Factory.

Just as in the MOMA exhibition, Factory offers a unique approach to design by combining the sharp intricacies of machinery with the soft flow of kinetic rhythm.

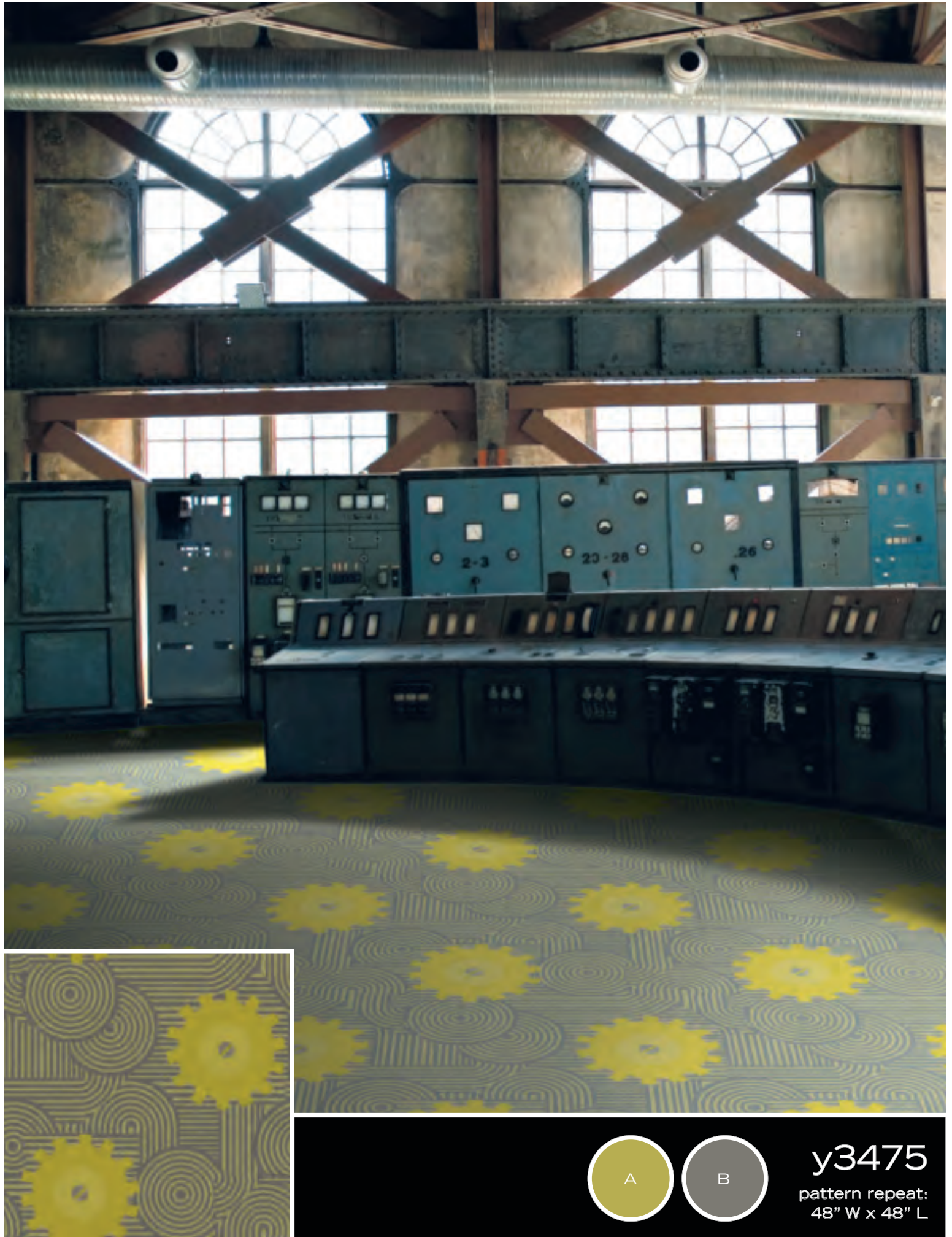




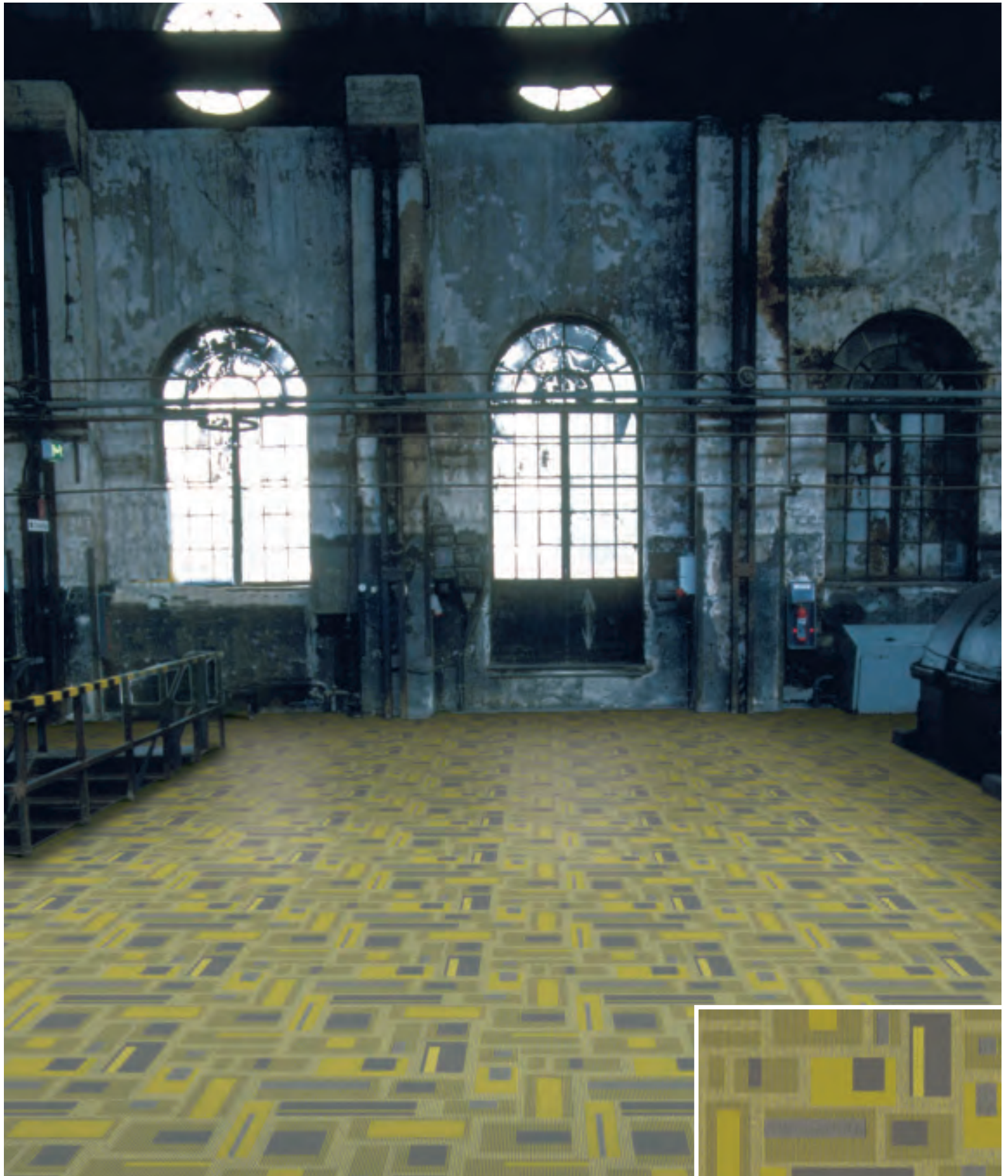
y3414
pattern repeat:
48" W x 32" L



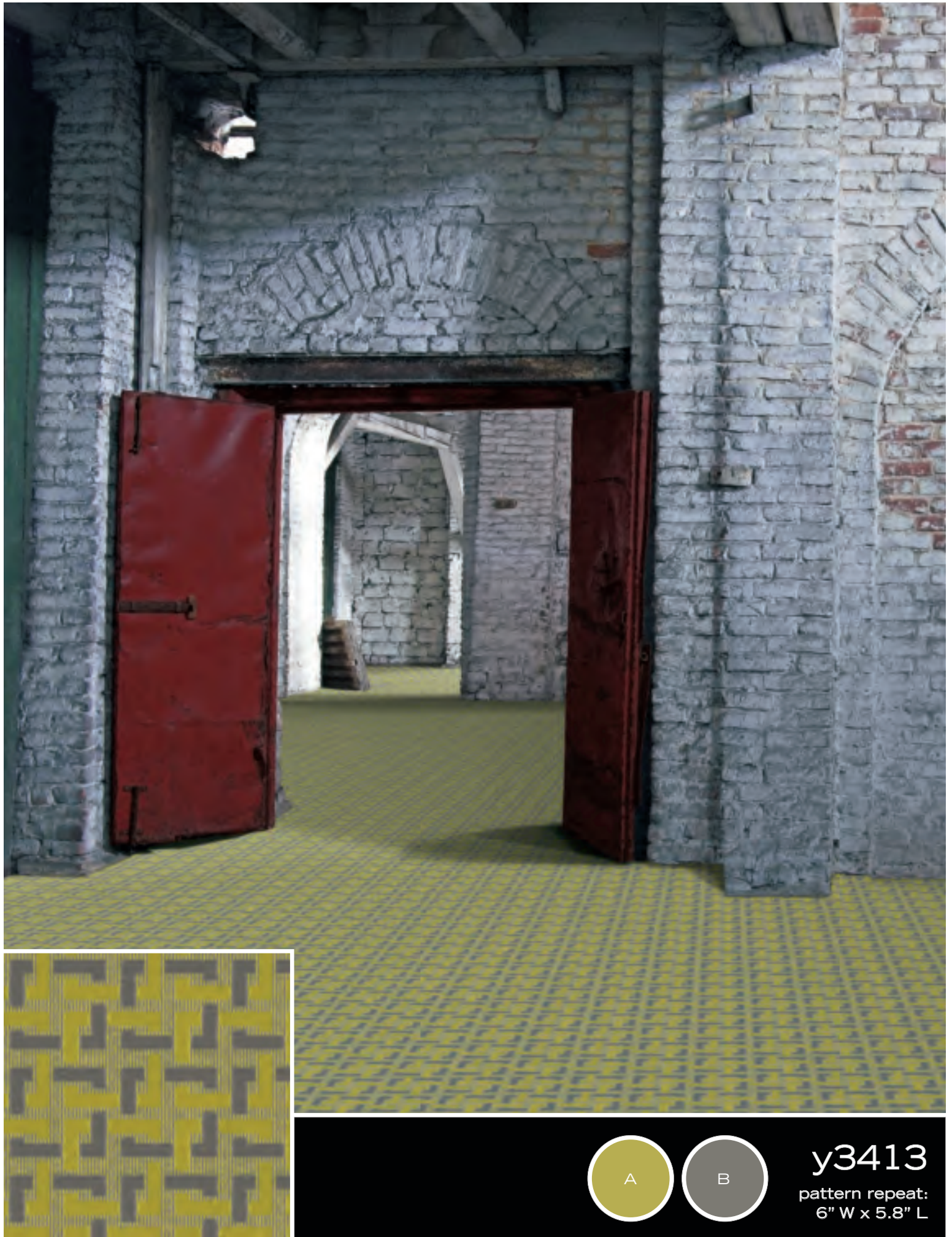
y3398
pattern repeat:
12" W x 12" L

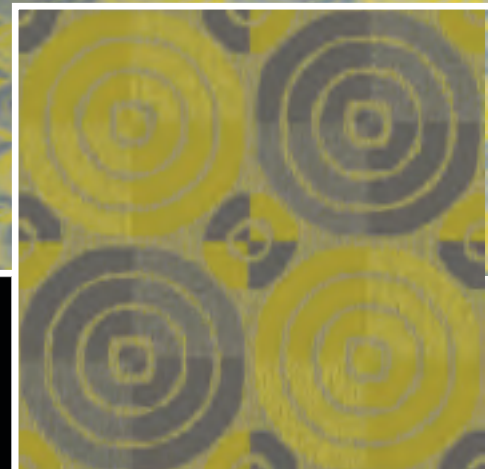
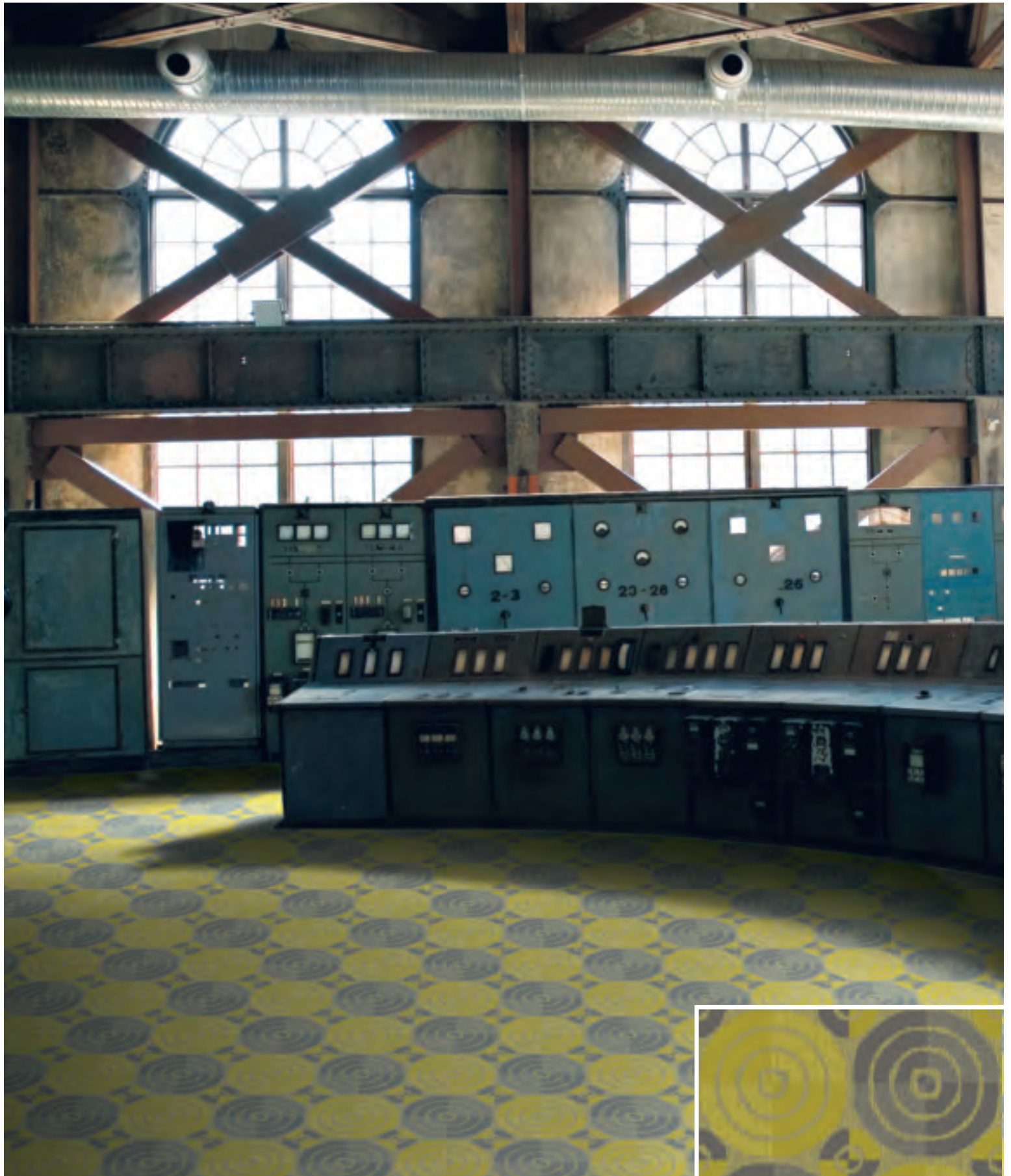


y3475
pattern repeat:
48" W x 48" L



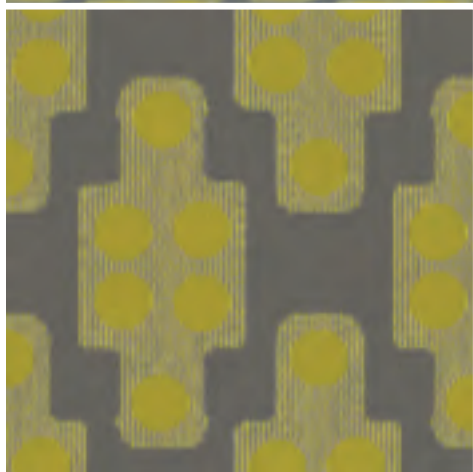
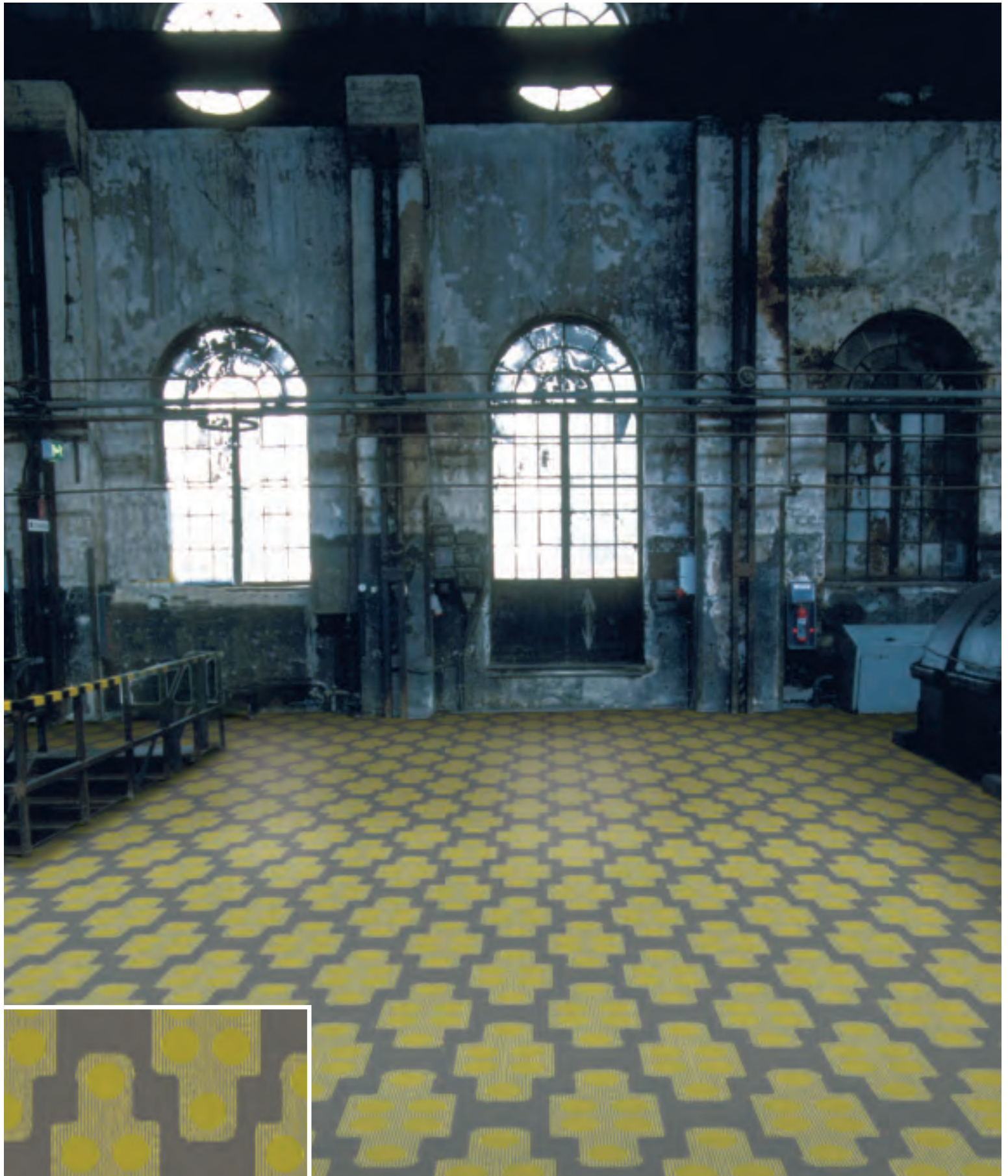
y3473
pattern repeat:
24" W x 24" L



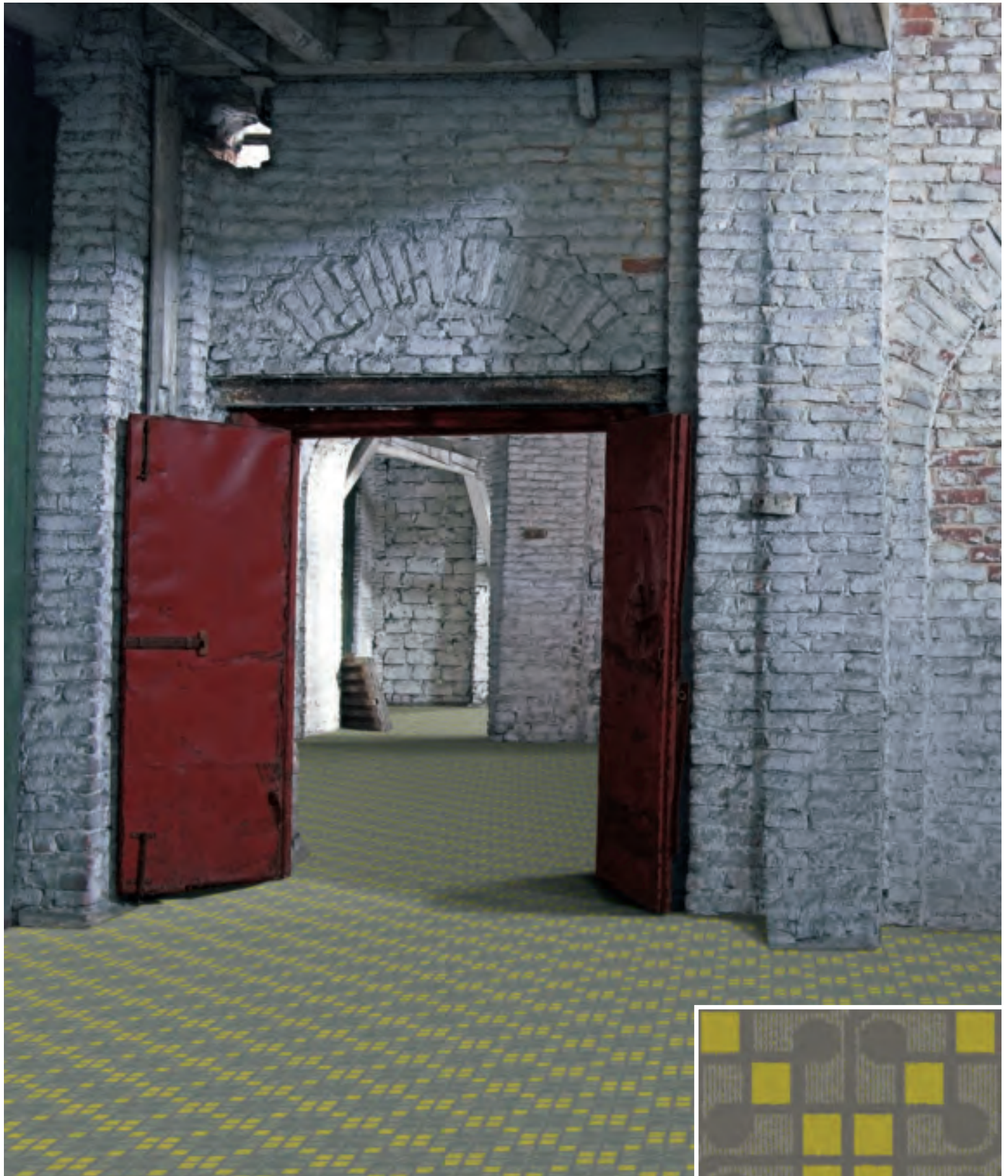


y3471

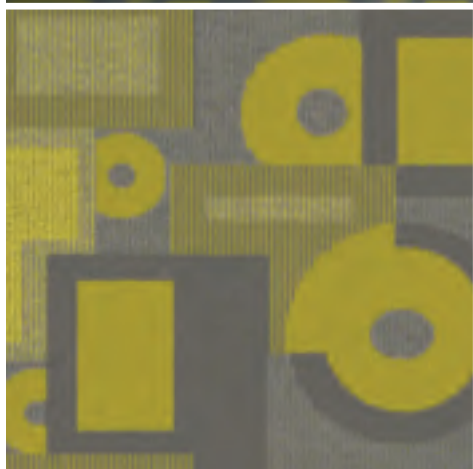
pattern repeat:
24" W x 24" L



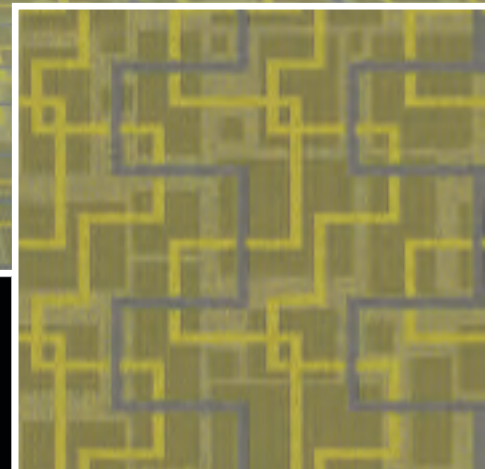
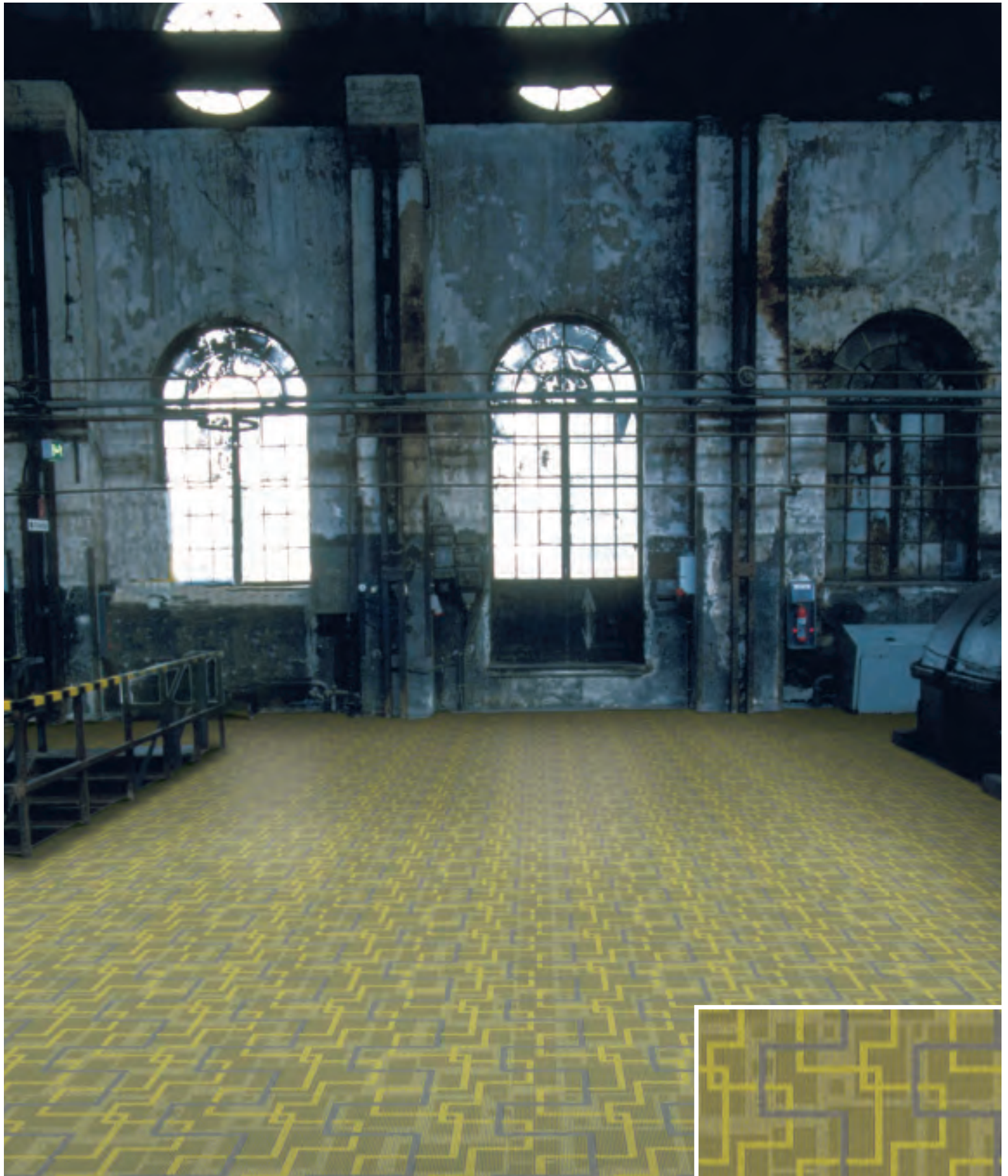
y3467
pattern repeat:
12" W x 18" L



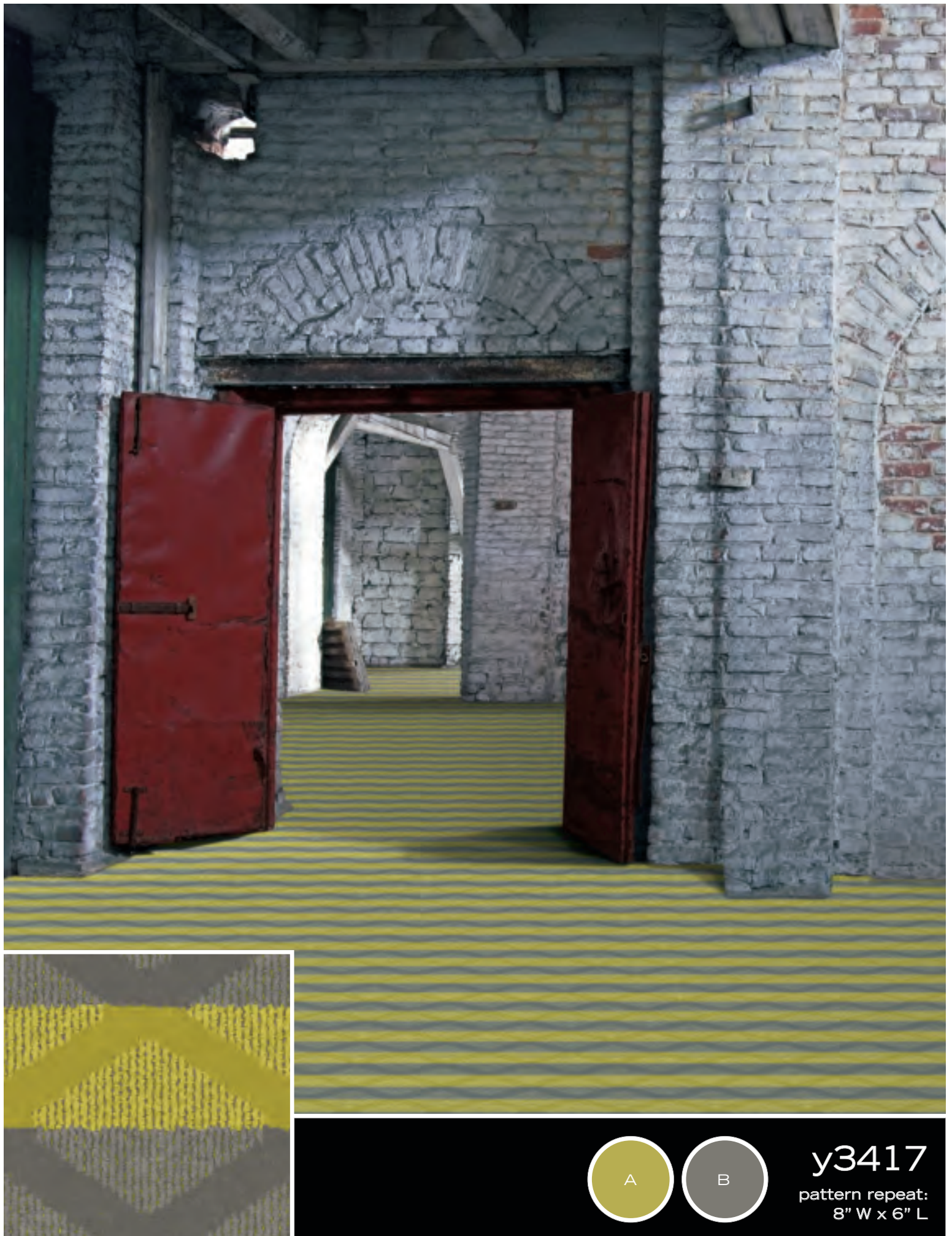
y3415
pattern repeat:
12" W x 12" L



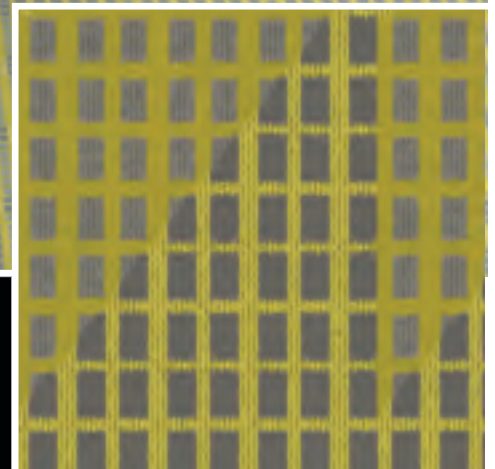
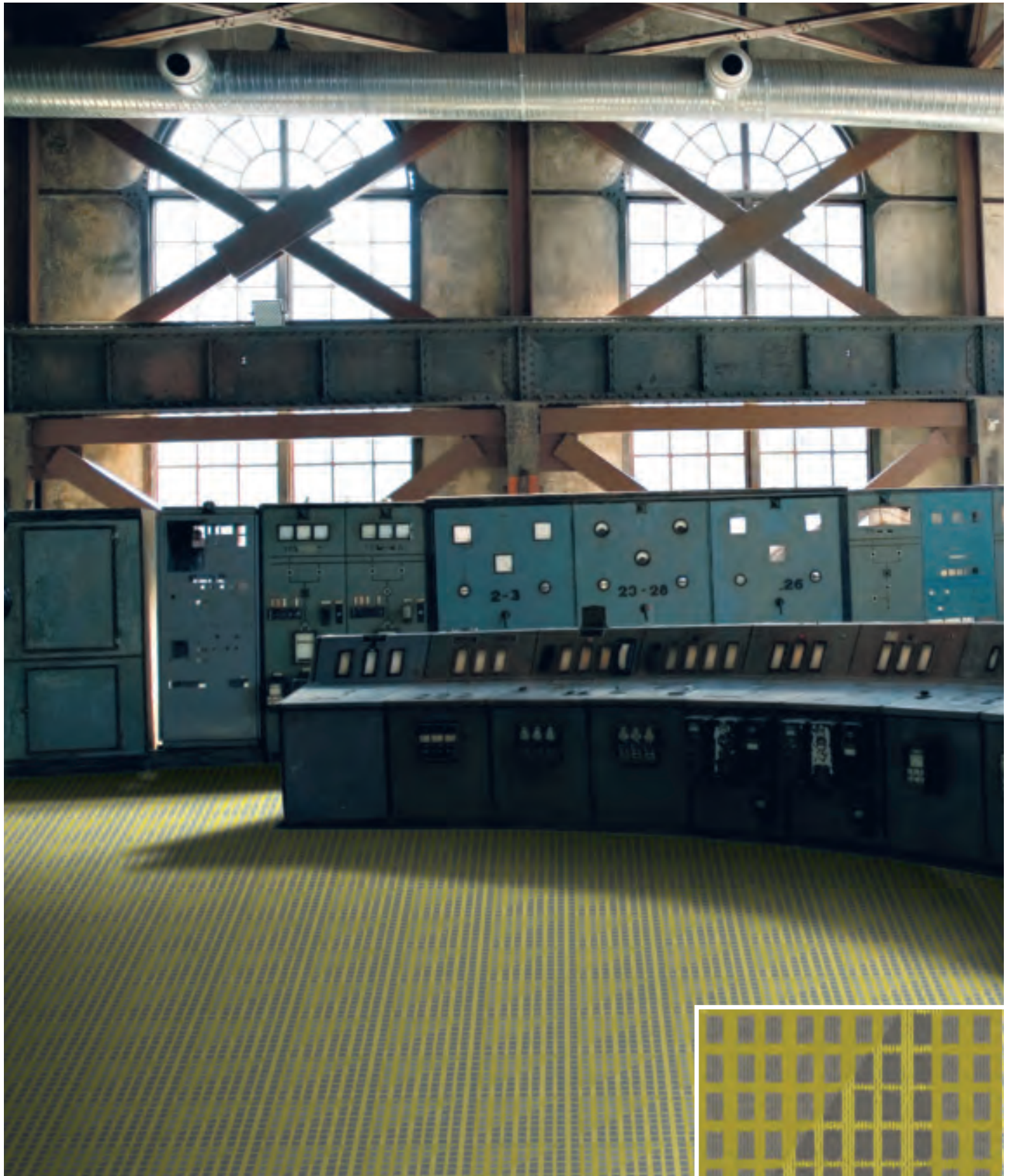
y3470
pattern repeat:
24" W x 20" L



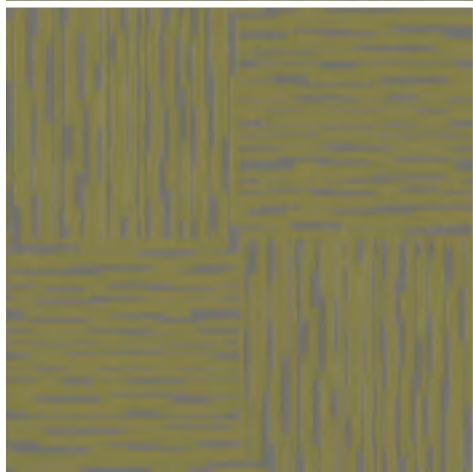
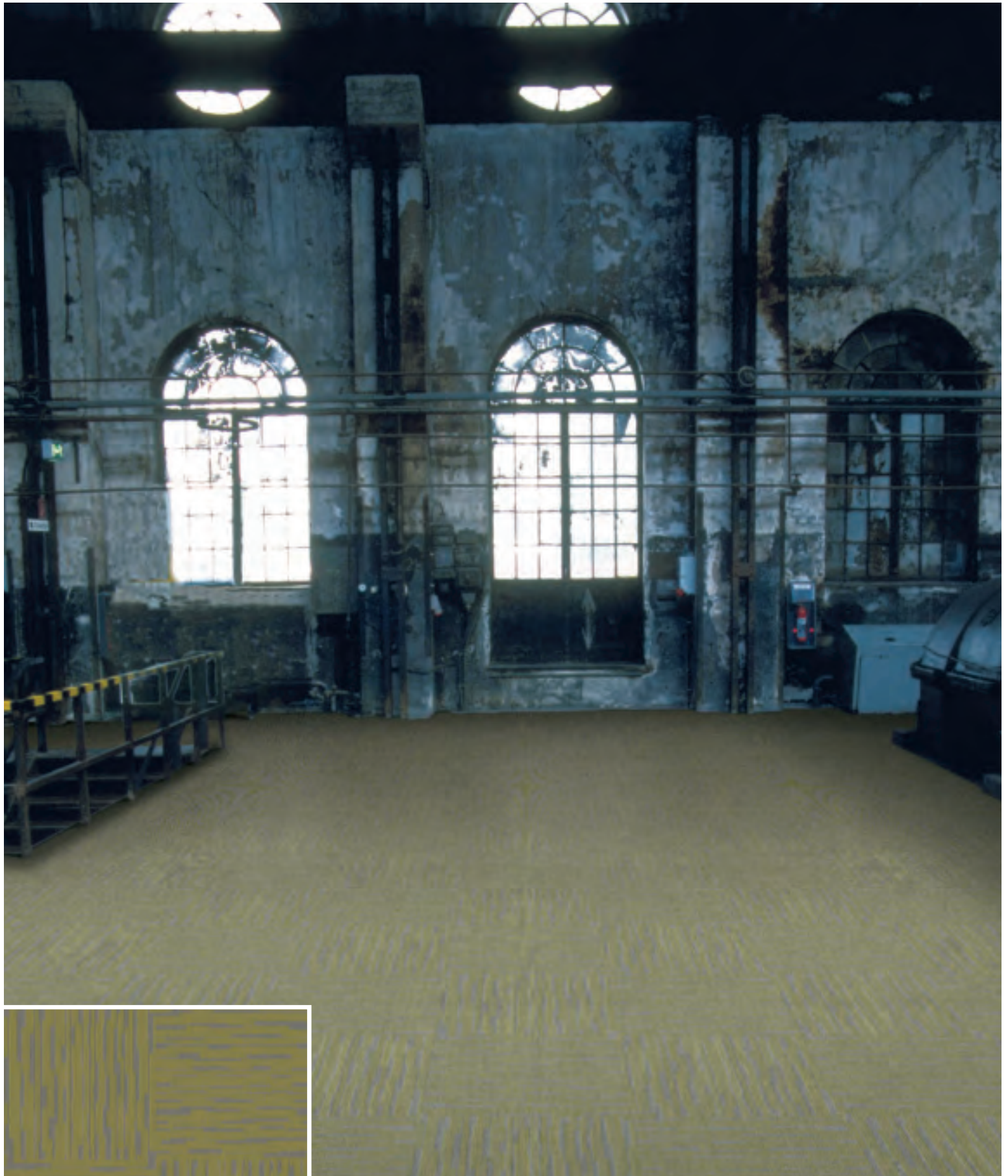
y3469
pattern repeat:
24" W x 24" L



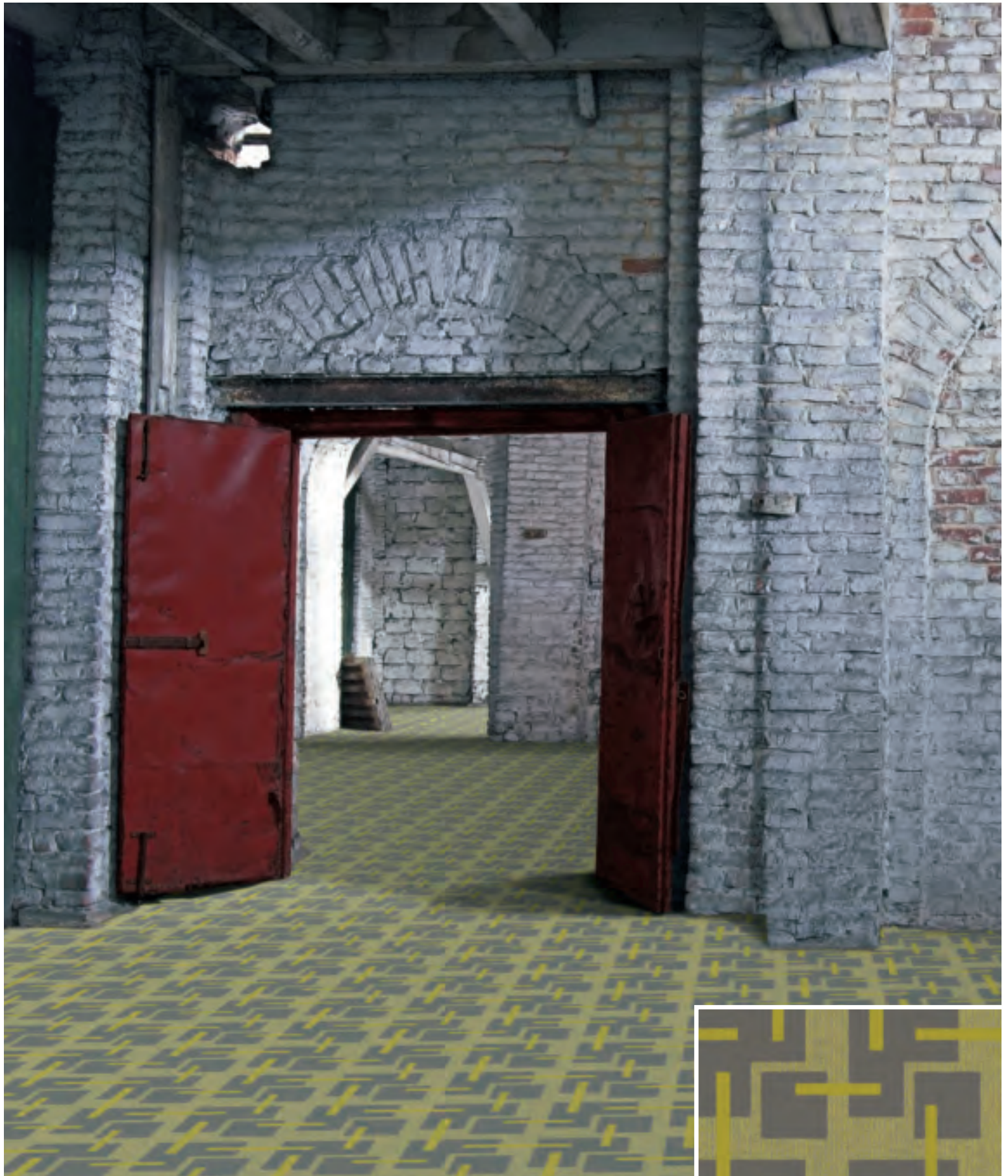
y3417
pattern repeat:
8" W x 6" L



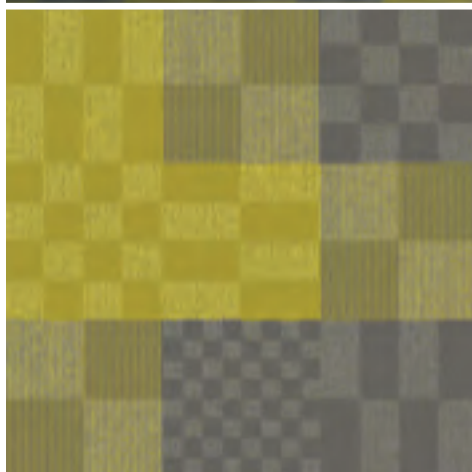
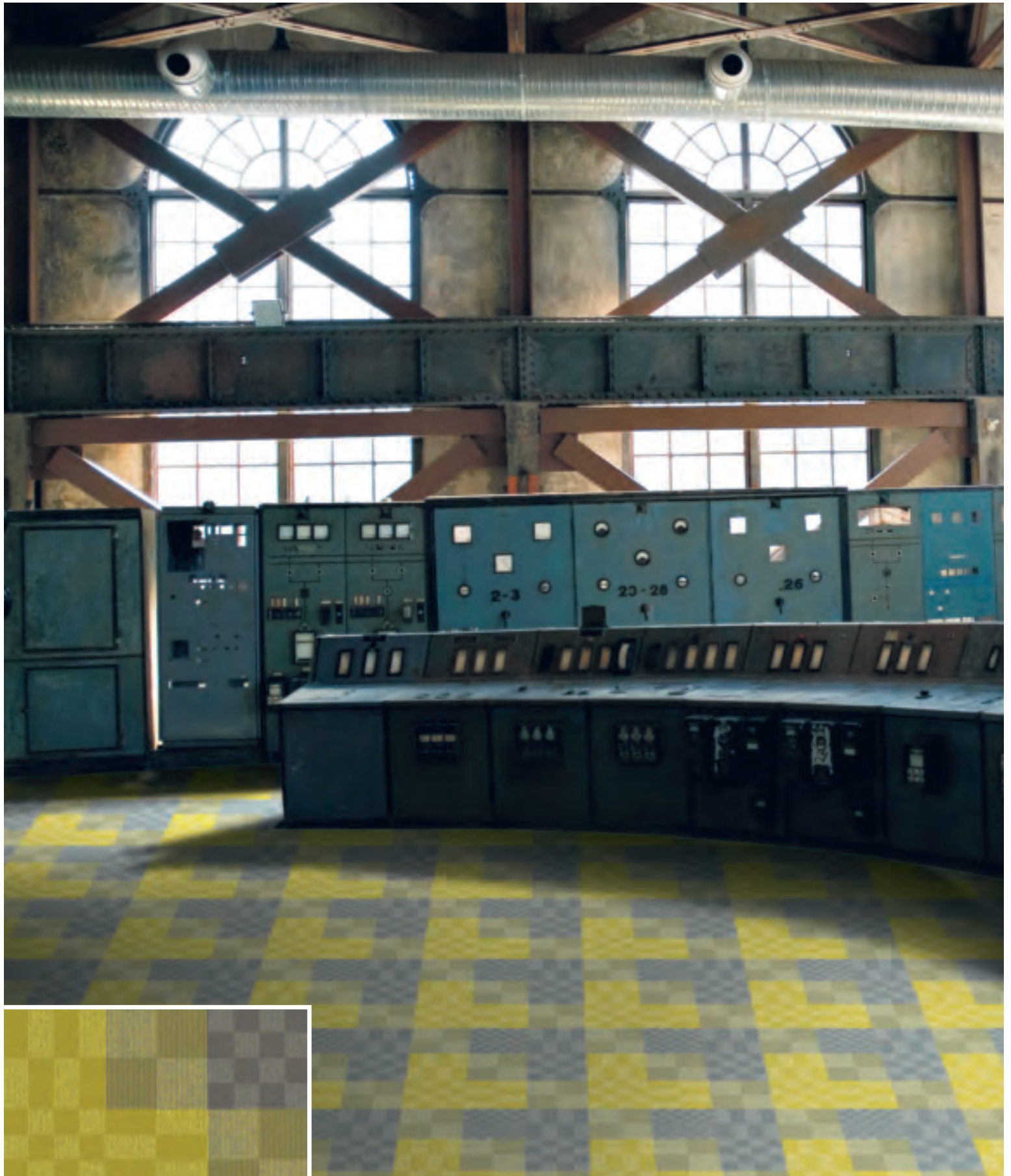
y3468
pattern repeat:
12" W x 15.6" L



y3412
pattern repeat:
48" W x 48" L



y3472
pattern repeat:
24" W x 24" L



y3411
pattern repeat:
24" W x 24" L



y3474
pattern repeat:
24" W x 32" L

FACTORY

specifications

application:	guest rooms
description:	multi-level cut and loop
fiber type:	100% Eco Solution Q® Premium Branded SD Nylon
dye method:	solution dyed
gauge:	1/10"
stitches per inch:	10.8
tufted pile height:	.220"
production weight:	32 oz./sq. yd.*
density:	5,236 oz./yd.
weight density:	167,552
protective treatments:	SRS Stain Resistance System
secondary backing:	ClassicBac™
available widths:	12', 13' 6", and 15'

***Specifications available in public space face weights of 34 oz. to 36 oz.**

Specifications are subject to normal manufacturing tolerances.

Flooring Radiant Panel (ASTM E-648):

Class I

Smoke Density (ASTM E-662):

Less than 450

Electrostatic Propensity:

Less than 3.5 KV

Warranty:

Lifetime Limited Commercial

Lifetime Limited Stain

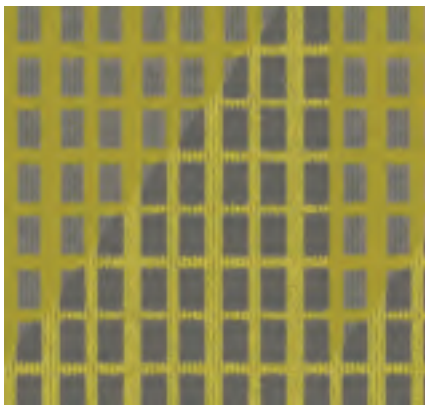
ADA Compliance:

This product meets the Guidelines as Set Forth in the Americans with Disabilities Act for Minimum Static Coefficient of Friction for 0.6 for Accessible Routes.

eco[®]solution Q[®]

Environmental:

- MBDC Cradle to Cradle certified, meaning it is fully recyclable back into carpet fiber
- 100% sustainable through the Shaw Green Edge Recycling Program
- contains a minimum of 25% pre-consumer recycled content
- contributes to LEED point rating system for recycled content, low emitting materials and innovation in design
- Green Label Plus Certified



shaw | HOSPITALITY GROUP™
the language of design

www.shawhospitalitygroup.com

866.758.3239

©2009 Shaw Industries, a Berkshire Hathaway Company.



♻️ Printed on 20% recycled content paper. When no longer useful, please help us to preserve the environment by placing in a paper recycling container.



Mixed Sources
Product group from well-managed
forests, controlled sources and
recycled wood or fiber
www.fsc.org Cert no. SW-COC-003063
© 1996 Forest Stewardship Council