



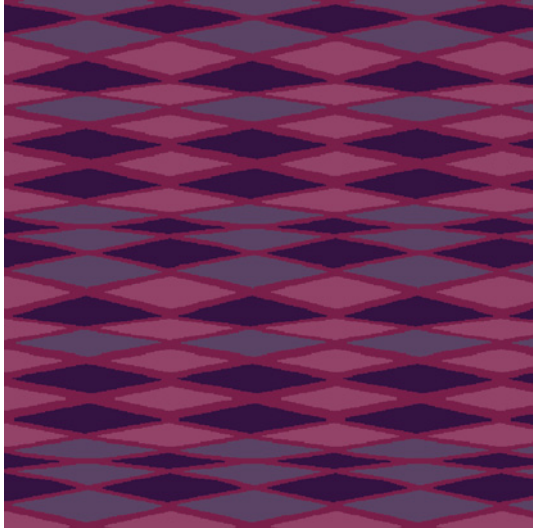
**Y2205**  
REPEAT: 36"W X 26.9"L

ES969 5256D  
A B



**Y2238**  
REPEAT: 36"W X 26.9"L

ES969 5256D  
A B



**Y2166**  
REPEAT: 18"W X 25.5"L

ES969 5256D  
A B



**Y2274**  
REPEAT: 24"W X 24"L

ES969 5256D  
A B



**Y2245**  
REPEAT: 18"W X 36"L

ES969 5256D  
A B



**Y2241**

5256D ES969  
A B



# AfterImages Collection

Specifications available in both guest room and public space face weights.

## eco solution Q®

Eco Solution Q® fiber, Shaw Green Edge Initiative | 004, contains a minimum of 25% recycled content and is a Cradle to Cradle product, meaning it is fully recyclable back into carpet fiber. Because Eco Solution Q can be recycled in an endless loop again and again, Shaw is diverting waste from landfills and reducing the amount of raw materials we use. Fully sustainable products - That's the Shaw Green Edge |

To learn more about Shaw Green Edge Initiatives, visit [www.shawhospitalitygroup.com](http://www.shawhospitalitygroup.com) & [www.shawgreenedge.com](http://www.shawgreenedge.com)

shaw | HOSPITALITY GROUP

[www.shawhospitalitygroup.com](http://www.shawhospitalitygroup.com)  
P.O. Drawer 2128  
Dalton, GA 30722-2128  
1.800.257.7429

©2007 Shaw Industries, a Berkshire Hathaway Company. All Rights Reserved, no printed material contained herein may be reproduced in whole or in part without express written permission of Shaw Industries. This brochure is produced with recyclable materials. When no longer useful, please help us to preserve the environment by placing in a paper recycling container.

AfterImages





**Y1982**  
REPEAT: 48"W X 48"L



**AfterImages**

Inspired by fashion and organic forms. The AfterImages collection plays off the contrast of texture and color created by the use of positive and negative imagery.

The result is a collection with a Contemporary Edge and Bold Visuals.



**Y1954**  
REPEAT: 24"W X 23.8"L



**Y1977**  
REPEAT: 36"W X 36"L



**Y1956**  
REPEAT: 36"W X 36"L



**Y1964**  
REPEAT: 24"W X 24"L



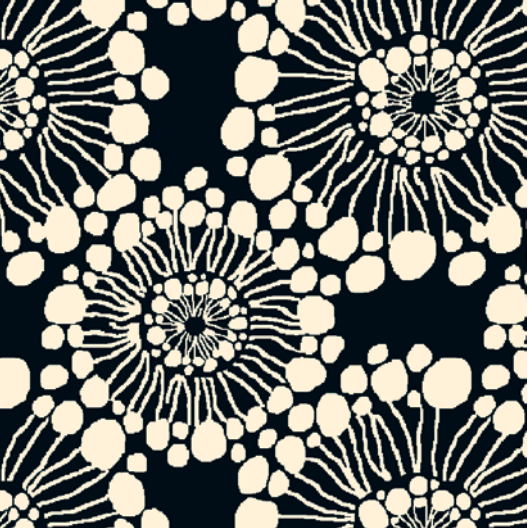
**Y1974**  
REPEAT: 36"W X 54"L



**A3603**  
REPEAT: 12"W X 24"L



**Y1907**  
REPEAT: 24"W X 36"L



**Y1951**  
REPEAT: 48"W X 48"L



**Y1933**  
REPEAT: 6"W X 6"L



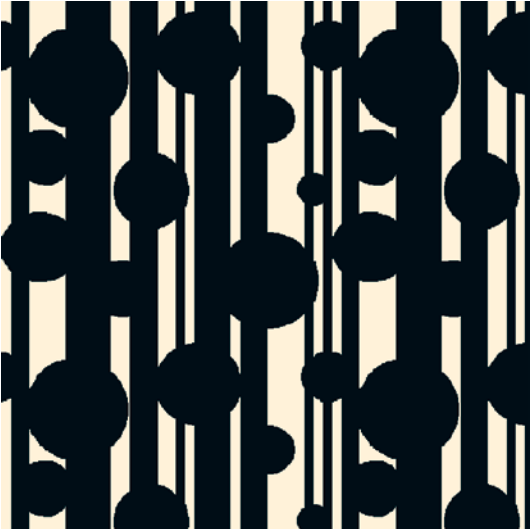
**Y1908**  
REPEAT: 24"W X 24"L



**Y1984**  
REPEAT: 36"W X 86"L



**A3604**  
REPEAT: 12"W X 24"L



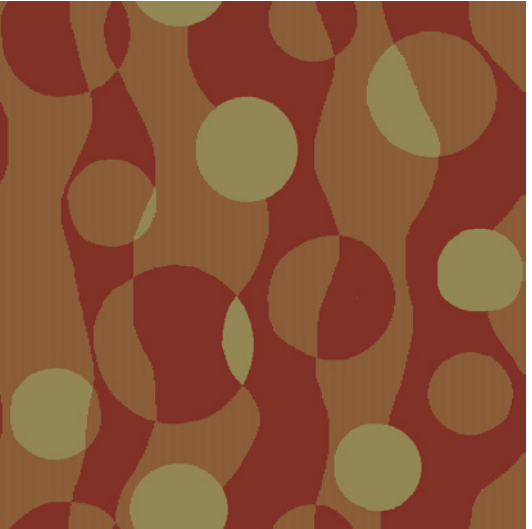
**Y1943**  
REPEAT: 36"W X 36"L



**Y1906**  
REPEAT: 36"W X 36"L



**Y1896**  
REPEAT: 36"W X 36"L



**Y1967**  
REPEAT: 72"W X 72"L

