A woman with red hair in a bun, wearing a white jumpsuit and high heels, stands on a floor with a complex geometric pattern of black, white, and blue lines. A large white sphere is positioned in the center of the frame. In the upper left, a geometric light fixture made of white cubes hangs from the ceiling. The background is a light gray wall.

BE BOLD

DESIGN IS FEARLESS



*REJECT COMPROMISE.
BE DYNAMIC.
INNOVATE AND LOOK AHEAD.
TRANSFORM YOUR SPACE.*

To design is to dare. To think big. To be bold. Introducing a collection that mixes pattern, color and texture in a brave new way. Architectural scaffolding, geometric grids, linear stripes, each with a mind of their own.

And each

with a

singularly

stylish

statement

to make.

That just so

happens to

end in an

exclamation

point.

BELOW

DESIGN IS FEARLESS



SLIDE

Linear stripes boldly go where few stripes have dared to venture. Straight lines suddenly slide into sharp diagonals, revealing new patterns in the process.

field YF03000



REPEAT: 12' X 12'

A	B	C	D	E	F
5221D cut	6025 cut loop	5433D cut loop	5223D cut loop	5790D loop	5829D loop

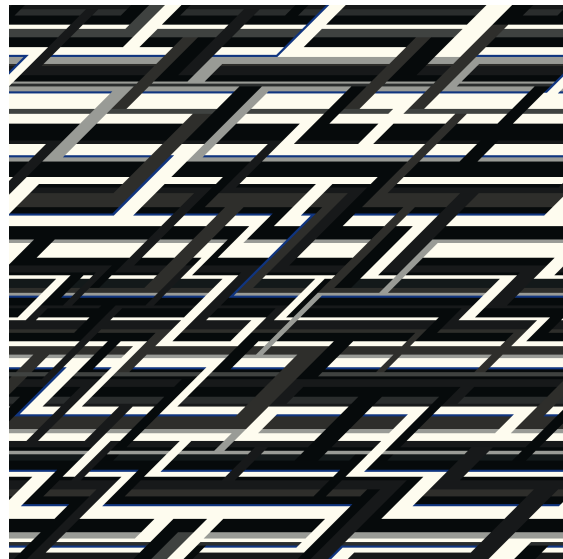
field YF03001



REPEAT: 12' X 12'

A	B	C	D	E	F
5221D cut	6025 cut loop	5433D cut loop	5223D cut loop	5790D loop	5829D loop

field YF03002



REPEAT: 12' X 12'

A	B	C	D	E	F
5221D cut	6025 cut loop	5433D cut loop	5223D cut loop	5790D loop	5829D loop

corridor YR03014



SIZE: 6' X 12'

A	B	C	D	E	F
5221D cut	6025 cut loop	5433D cut loop	5223D cut loop	5790D loop	5829D loop

rug YR03015



SIZE: 12' x 18'

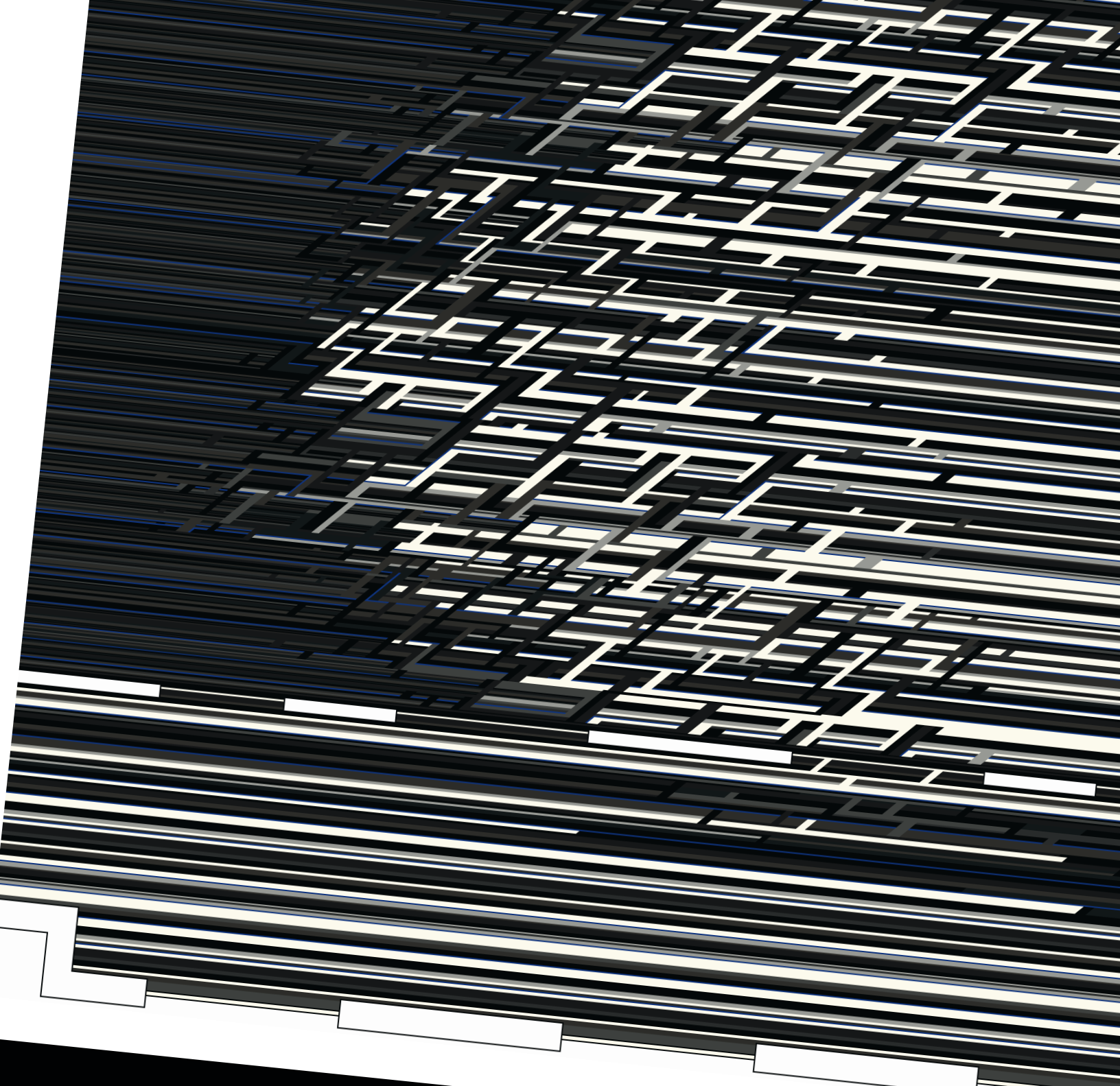
A	B	C	D	E	F
5221D cut	6025 cut loop	5433D cut loop	5223D cut loop	5829D cut loop	5790D loop



FORCE AHEAD IN A BRAVE NEW DIRECTION







BEAUTY IS IN THE EYE OF THE BOLDER

Combine different patterns to create your own dynamic mix. Here, we used a strong linear pattern for the corridor. Turn the corner into a meeting space and suddenly the energy slides up a few unexpected notches.



STRETCH

Delicate strings stretch across a rigid triangular framework and the result is purely elastic.

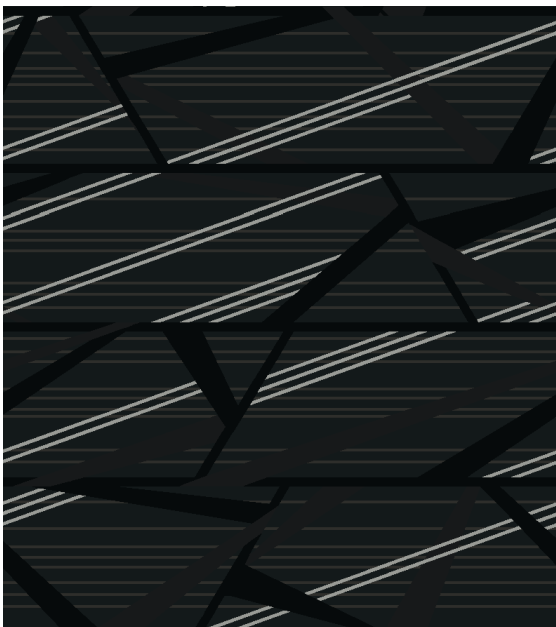
field YF03003



A	B	C	D
6025 cut	5433D cut	5223D cut loop	5790D loop

REPEAT: 6' X 6'9"

field YF03005



A	B	C	D
6025 cut	5433D cut	5223D cut loop	5790D loop

REPEAT: 6' X 6' 9"

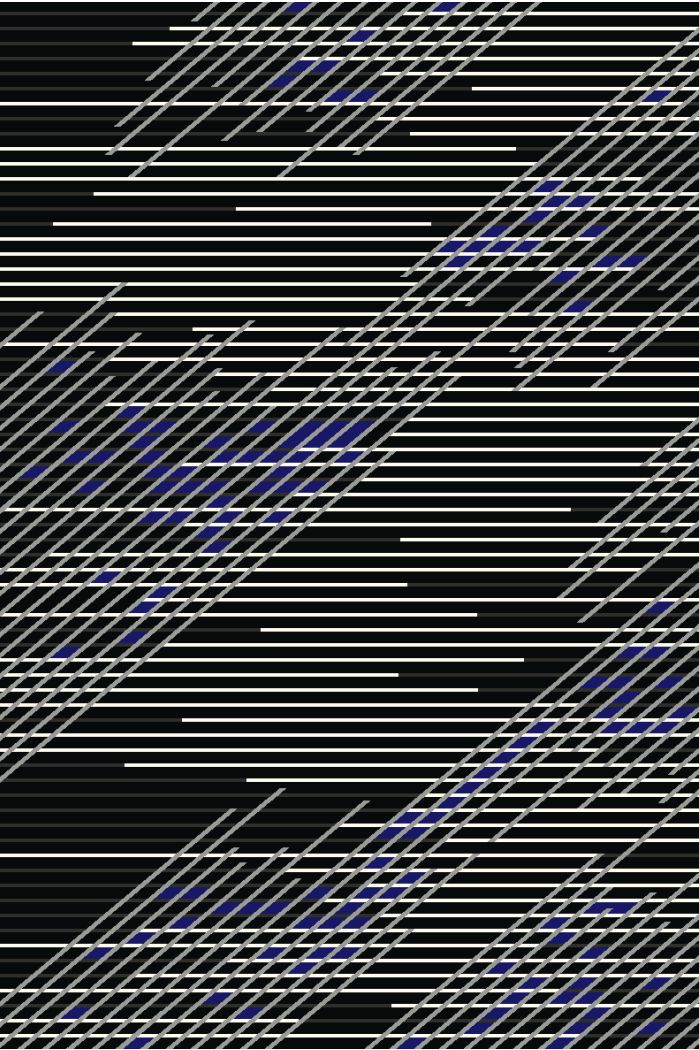
field YF03004



A	B	C	D
6025 cut	5433D cut	5223D cut loop	5790D loop

REPEAT: 6' X 6'9"

rug YR03018



SIZE: 6' X 9'

A	B	C	D	E
5221D	6025	5223D	5829D	5790D
cut	cut	cut	cut	loop

corridor YR03016



SIZE: 6' X 13'6"

A	B	C	D
6025	5433D	5223D	5790D
cut	cut	cut	loop

corridor YR03017



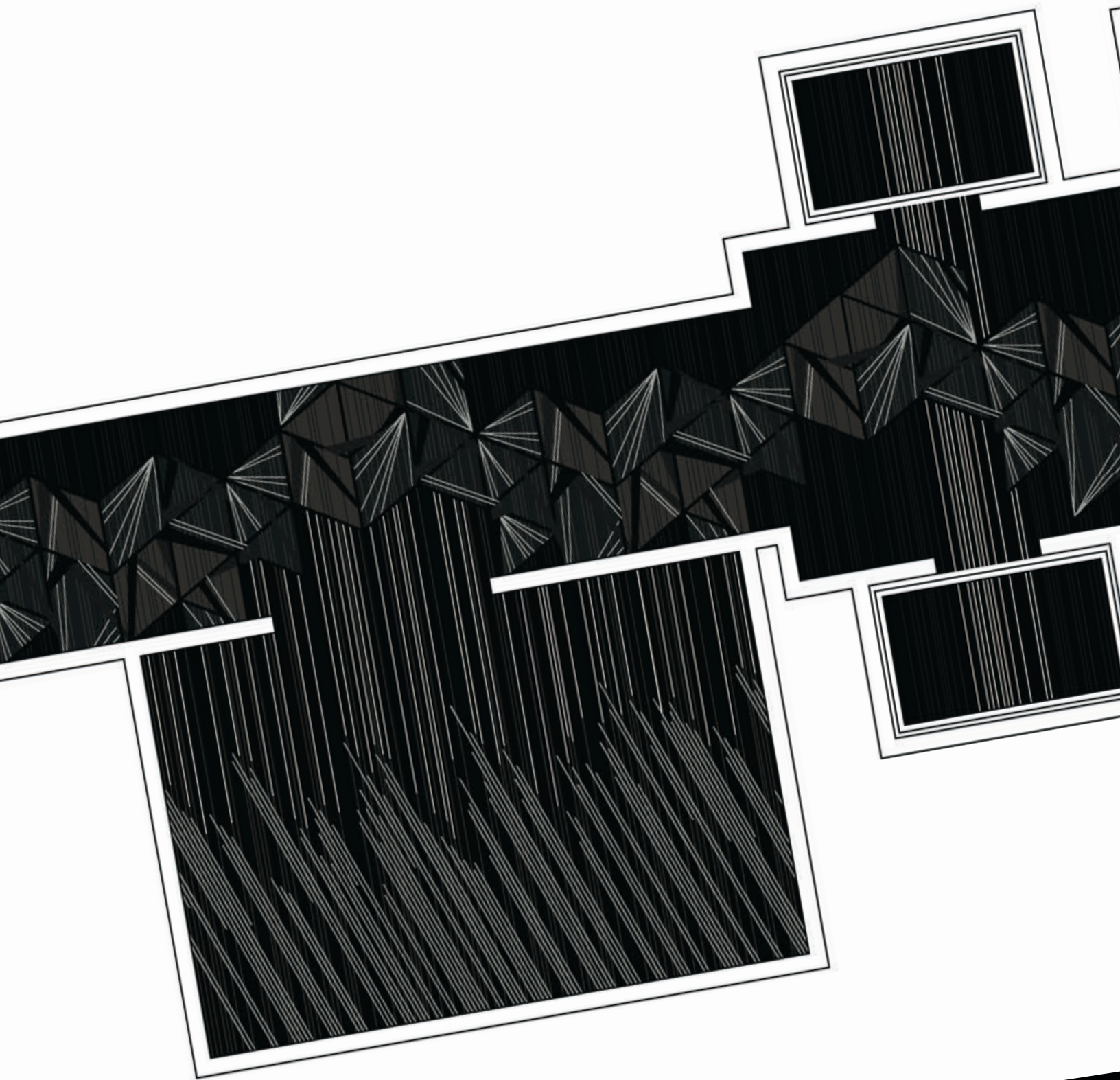
SIZE: 6' X 13'6"

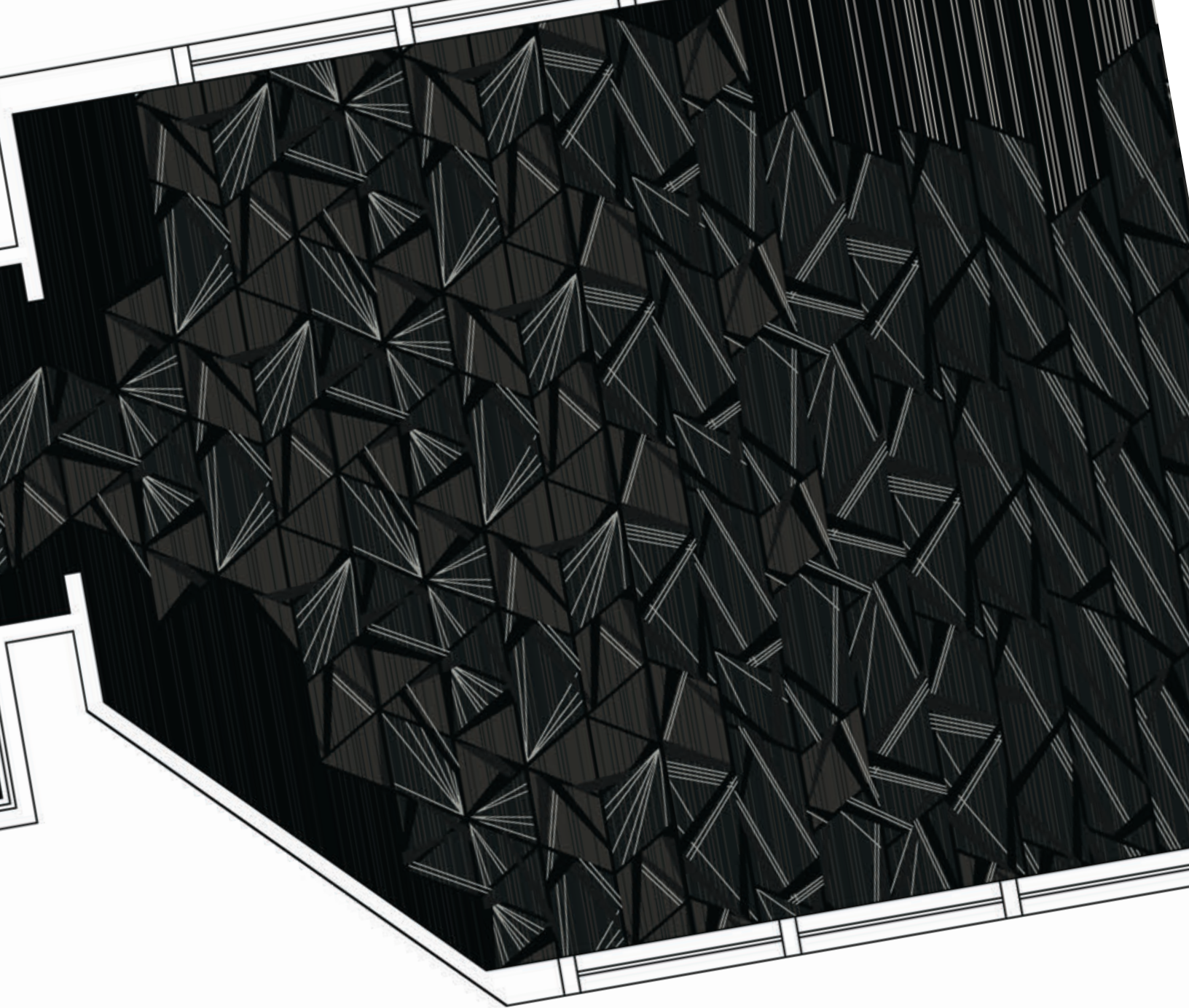
A	B	C	D
5221D	6025	5223D	5790D
cut	cut	cut	loop

REJECT COMPROMISE









FLEX YOUR STYLE

Try an elastic interchange of simple line and complex geometry, expanding and contracting the pattern from room to room. Stretch the boundaries of your creative vision in a way that is as sophisticated as it is playful.

MORPH

Kinetic, linear shapes morph into fluid forms and optical geometric shapes. Movement this unrestrained could never be confined to a single space. It creates its own dynamic environment wherever it goes.

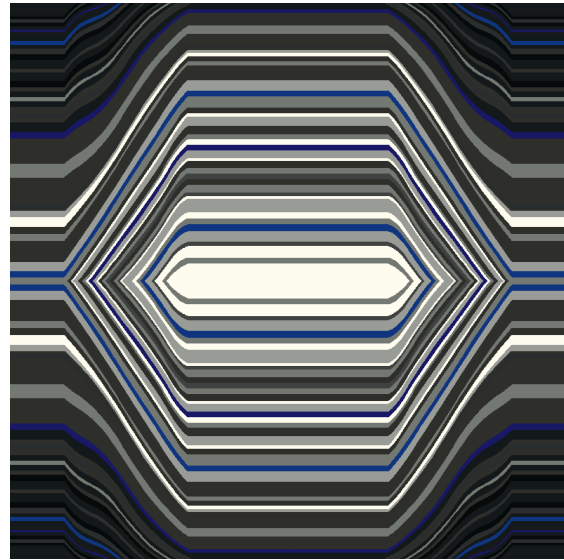
field YF03012



REPEAT: 6' X 6'

A	B	C	D	E	F
5221D cut	5790D cut loop	6025 cut	5433D cut loop	5223D cut loop	5829D cut loop

field YF03013

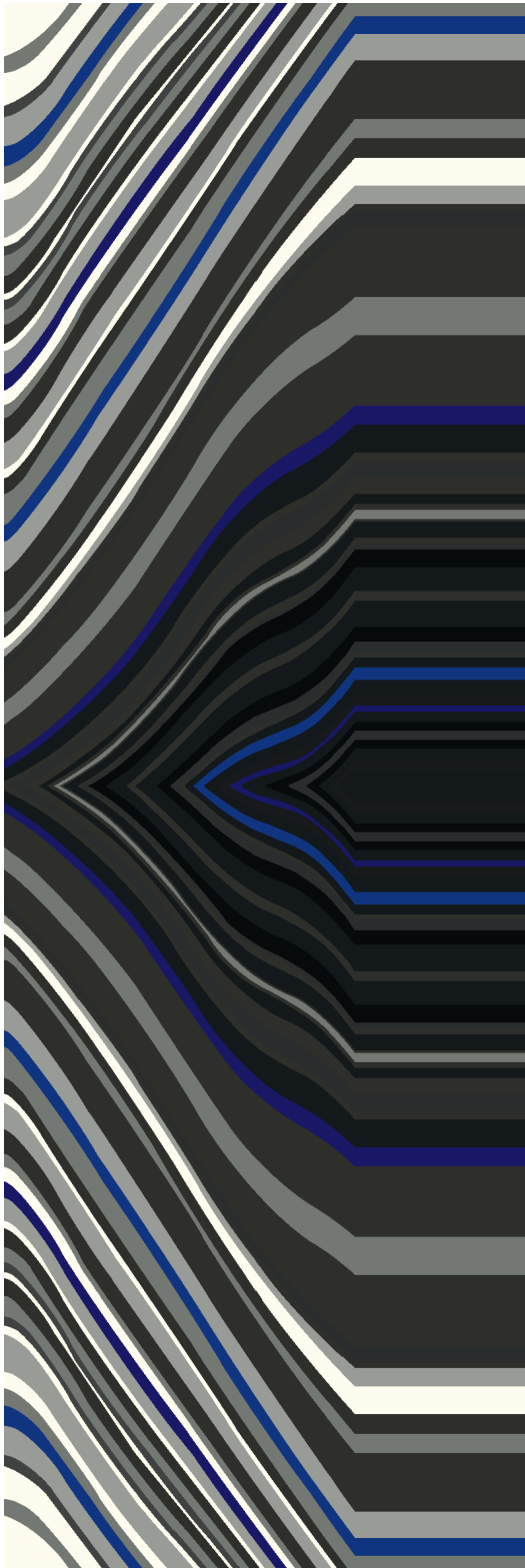


REPEAT: 6' X 6'

A	B	C	D	E	F
5221D cut	5790D cut loop	6025 cut loop	5433D cut loop	5223D cut loop	5829D cut loop



corridor YR03023



SIZE: 6' X 18'

A	B	C	D	E	F
5221D cut	5790D cut loop	6025 cut loop	5433D cut loop	5223D cut loop	5829D cut loop

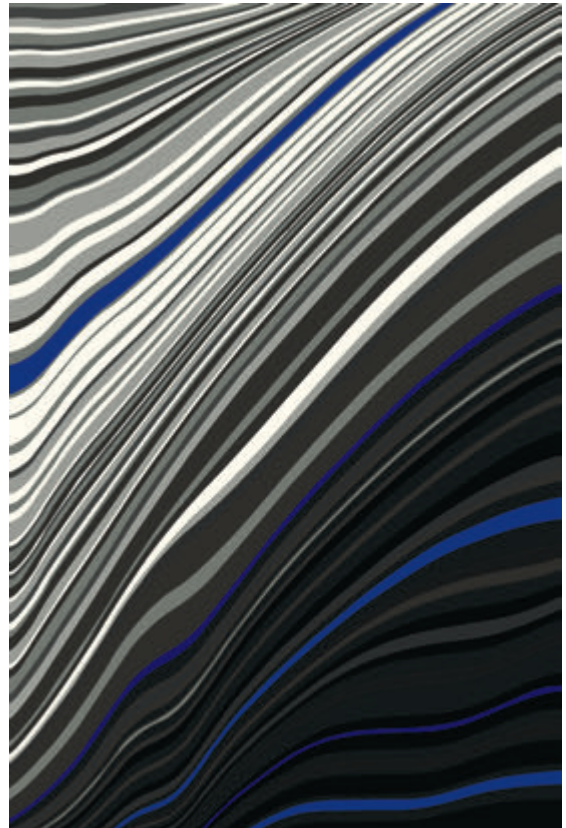
rug YR03025



SIZE: 6' X 9'

A	B	C	D
6025 cut	5433D cut loop	5223D cut loop	5829D cut loop

rug YR03024



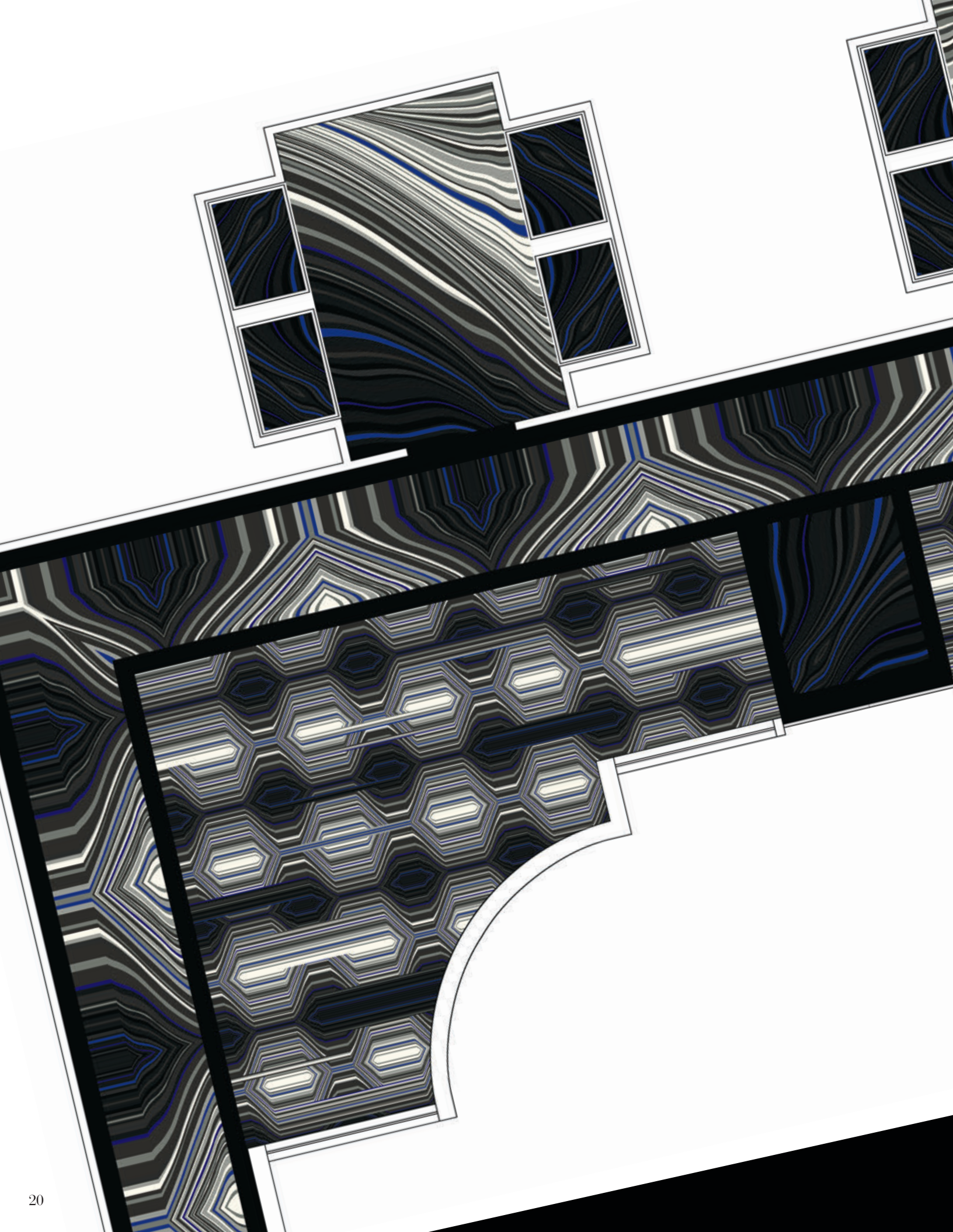
SIZE: 12' X 18'

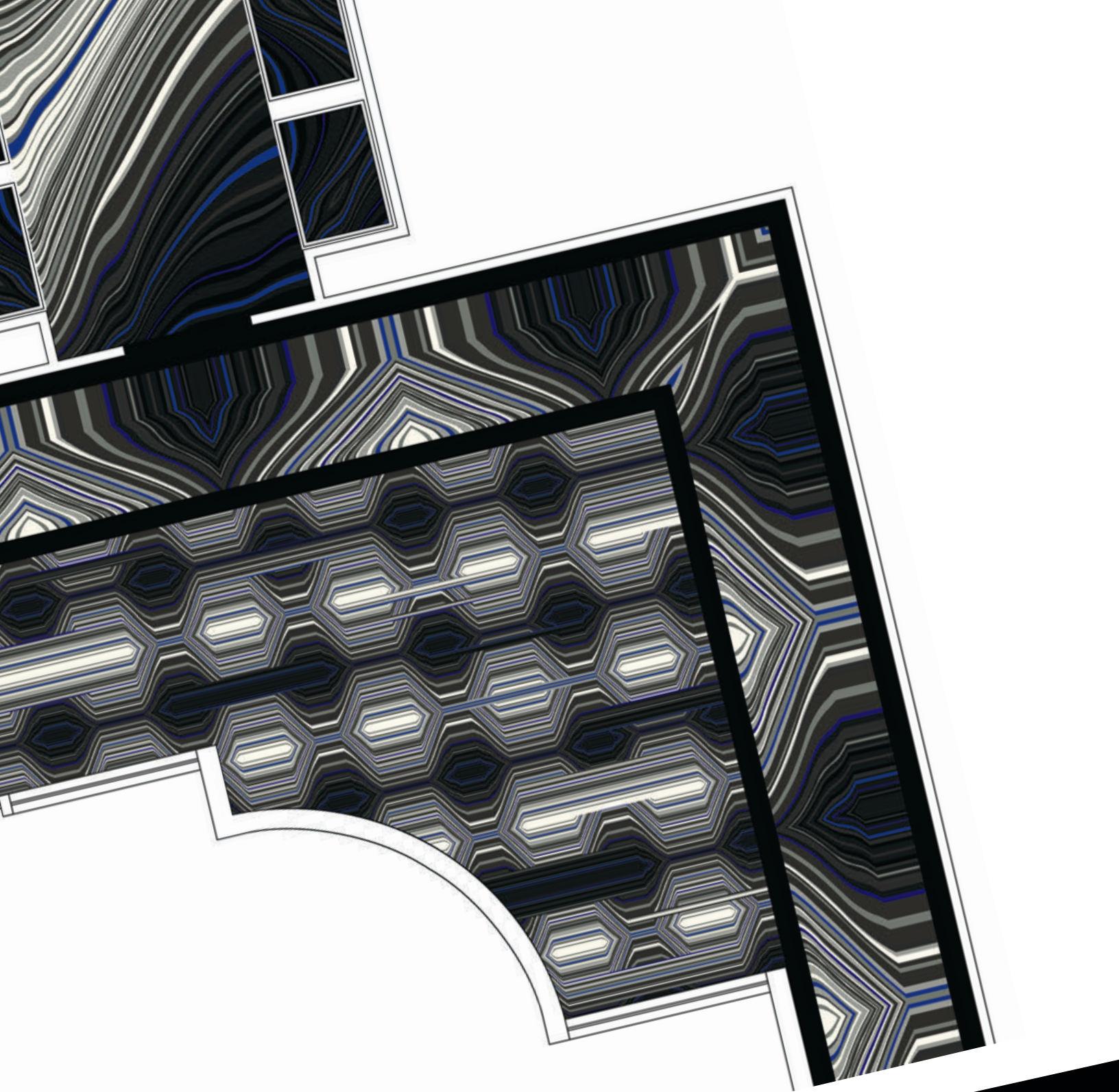
A	B	C	D	E	F
5221D cut	5790D cut loop	6025 cut loop	5433D cut loop	5223D cut loop	5829D cut loop

THROW CAUTION TO THE w_{IND}





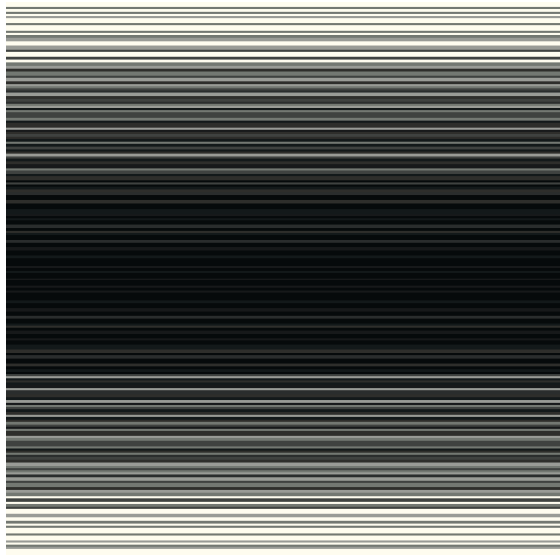




LOOK ALIVE

Create synergy that flows through grand open spaces. The mix of undulating pattern is completely up to you. Vary the tones from dark to light forming a random pattern that marches to the beat of its own drummer.

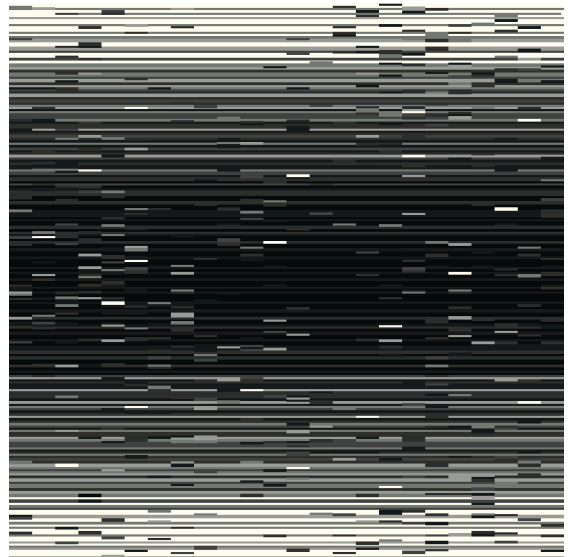
field YF03009



REPEAT: 6' X 6'

A	B	C	D	E
5221D cut	5790D cut loop	6025 cut loop	5433D cut loop	5223D cut loop

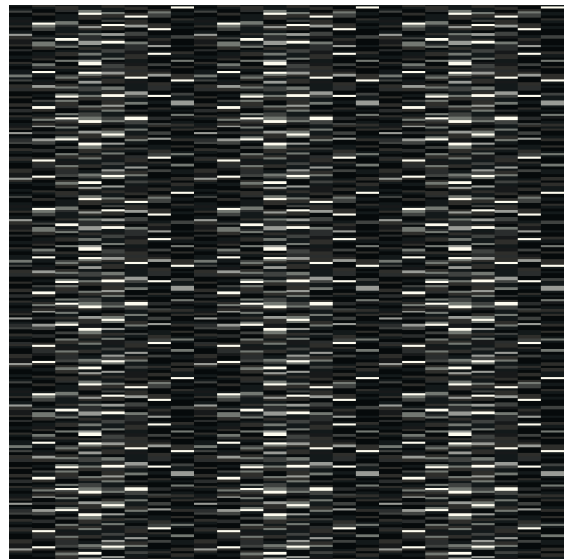
field YF03010



REPEAT: 6' X 6'

A	B	C	D	E
5221D cut	5790D cut loop	6025 cut loop	5433D cut loop	5223D cut loop

field YF03011



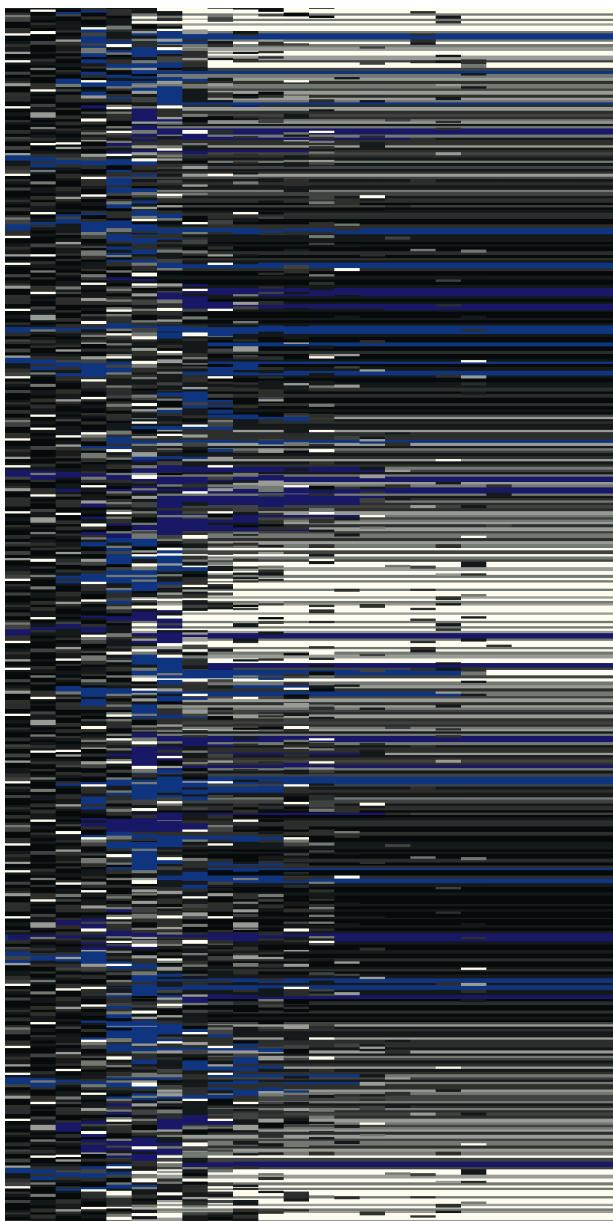
REPEAT: 6' X 6'

A	B	C	D	E
5221D cut	5790D cut loop	6025 cut loop	5433D cut loop	5223D cut loop

A bold stroke of geometric genius. Shifting tones of black and white move along a gradient, creating form, motion and a dynamic pattern.

SHIFT

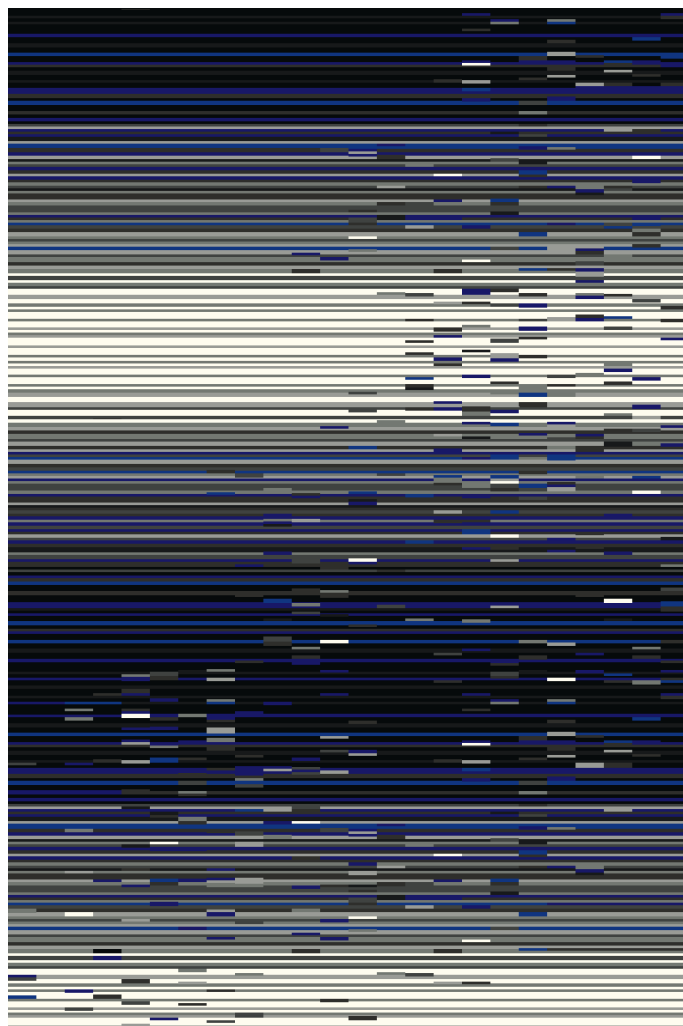
corridor YR03021



SIZE: 6' X 12'

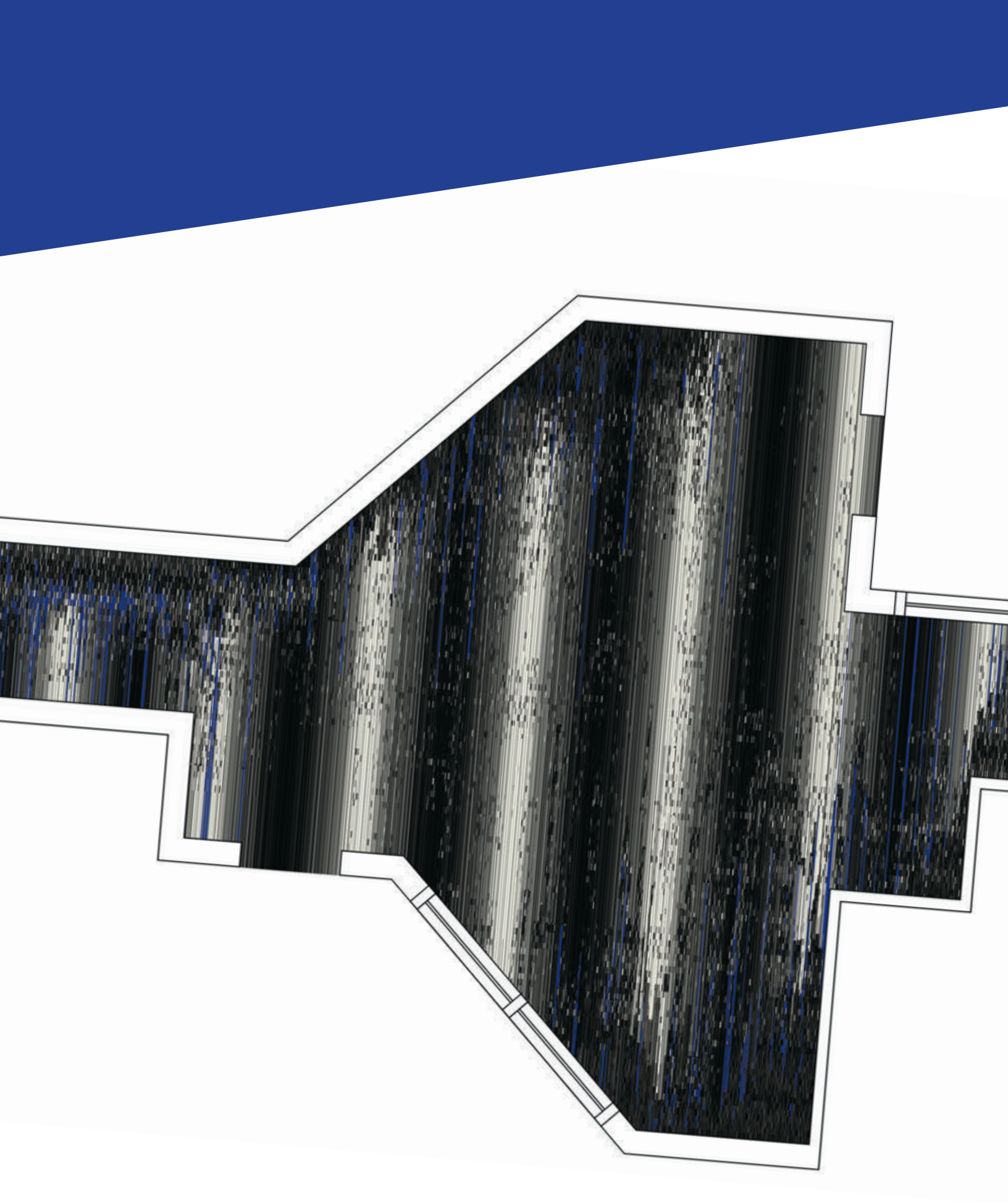
A	B	C	D	E	F
5221D cut	5790D cut loop	6025 cut loop	5433D cut loop	5223D cut loop	5829D cut loop

rug YR03022



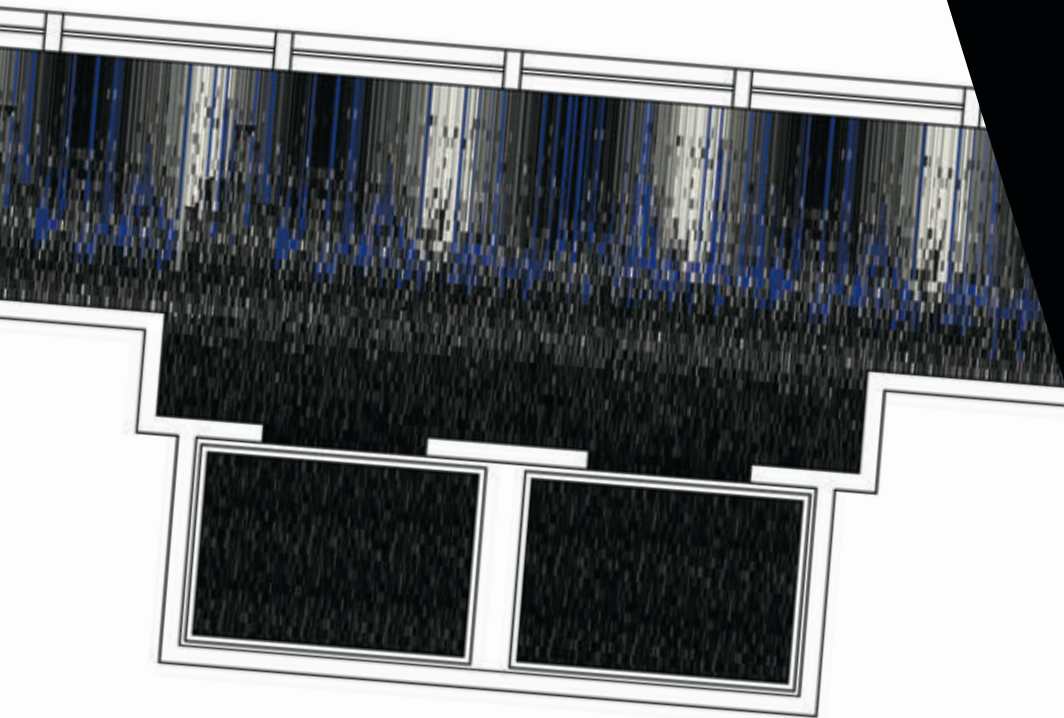
SIZE: 6' X 9'

A	B	C	D	E
5221D cut	5790D cut loop	6025 cut loop	5223D cut loop	5829D cut loop



SHAPE SHIFTERS

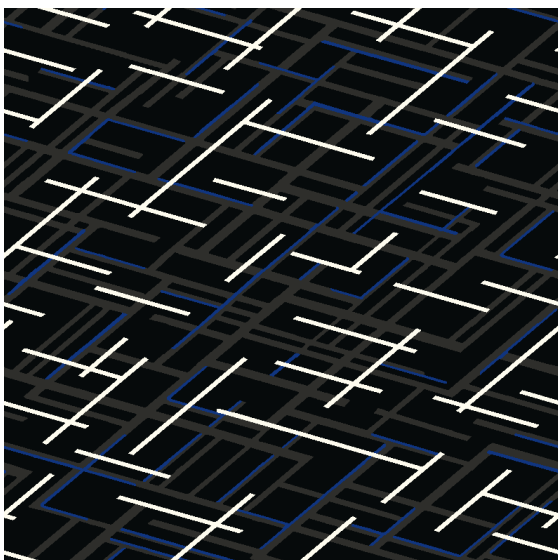
Create bold tension in public spaces that shift to neutral calm in more intimate areas. A gradient flow from light to dark and back again as it drifts down strident corridors.



TRANSFORM

Architectural scaffolding transforms to slender, overlapping lines.
The energy morphs from irregular to regular, from angular to straight.

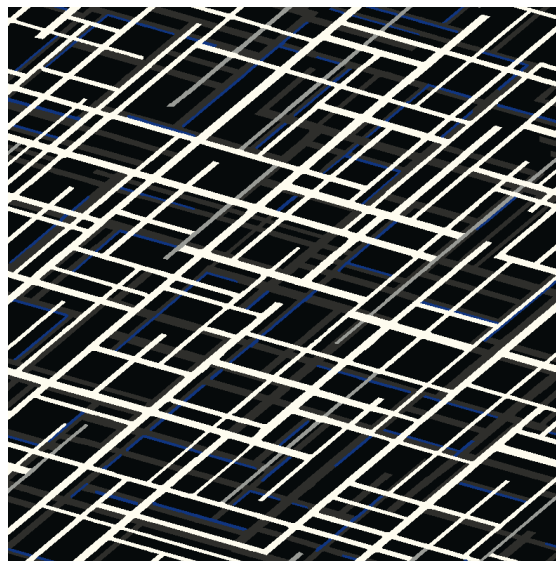
field YF03006



A	B	C	D
5221D cut	6025 cut	5223D cut	5829D loop

REPEAT: 6' X 6'

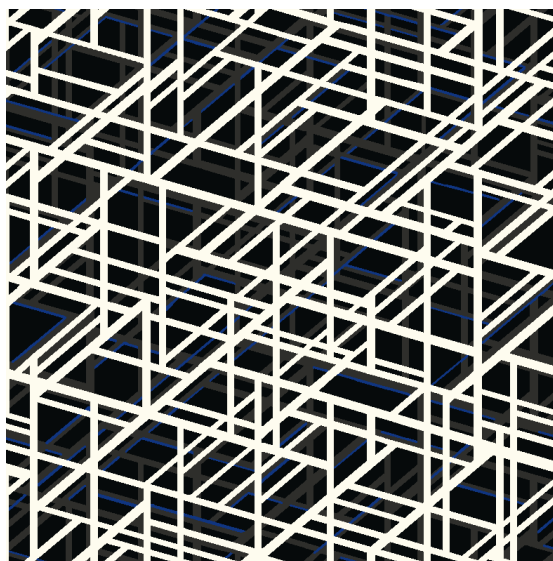
field YF03007



A	B	C	D	E
5221D cut	6025 cut	5223D cut	5790D loop	5829D loop

REPEAT: 6' X 6'

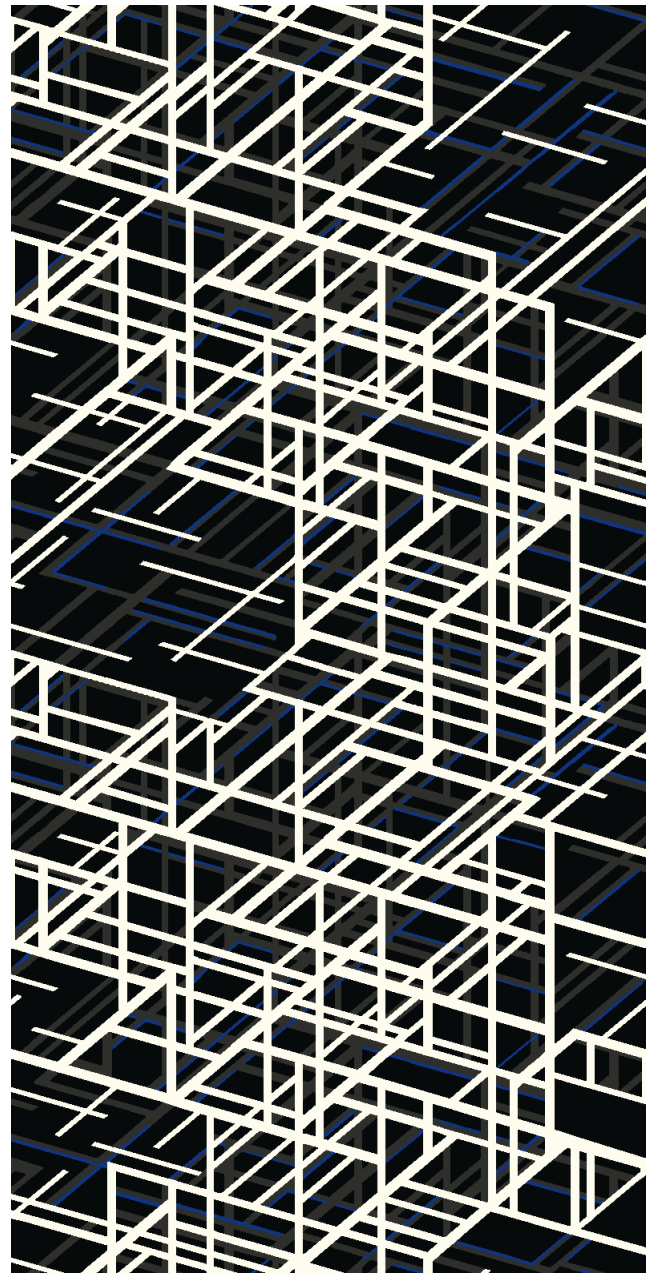
field YF03008



A	B	C	D
5221D cut	6025 cut	5223D cut	5829D loop

REPEAT: 6' X 6'

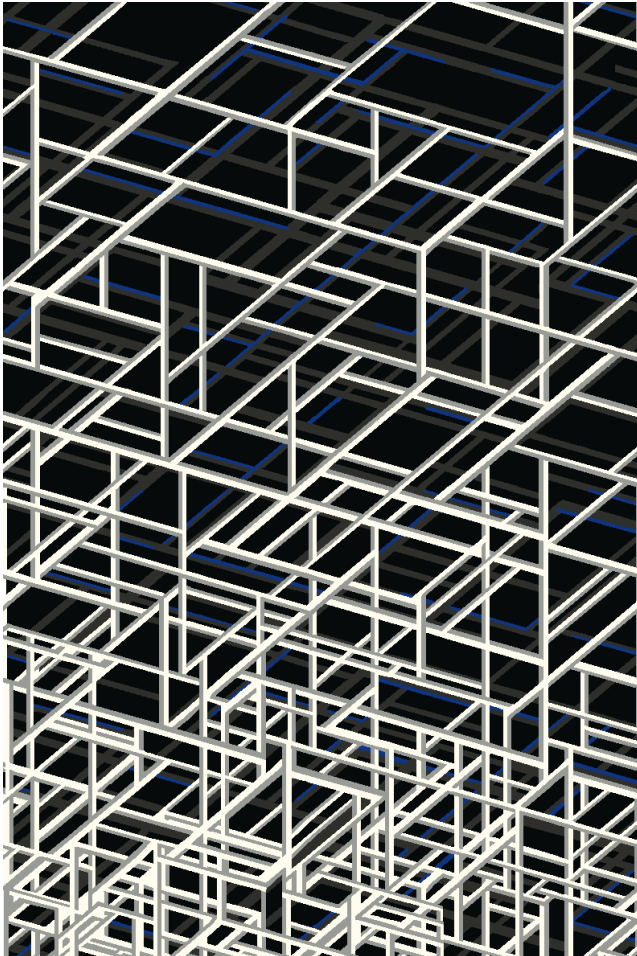
corridor YR03019



SIZE: 6' X 12'

A	B	C	D
5221D cut	6025 cut	5223D cut	5829D loop

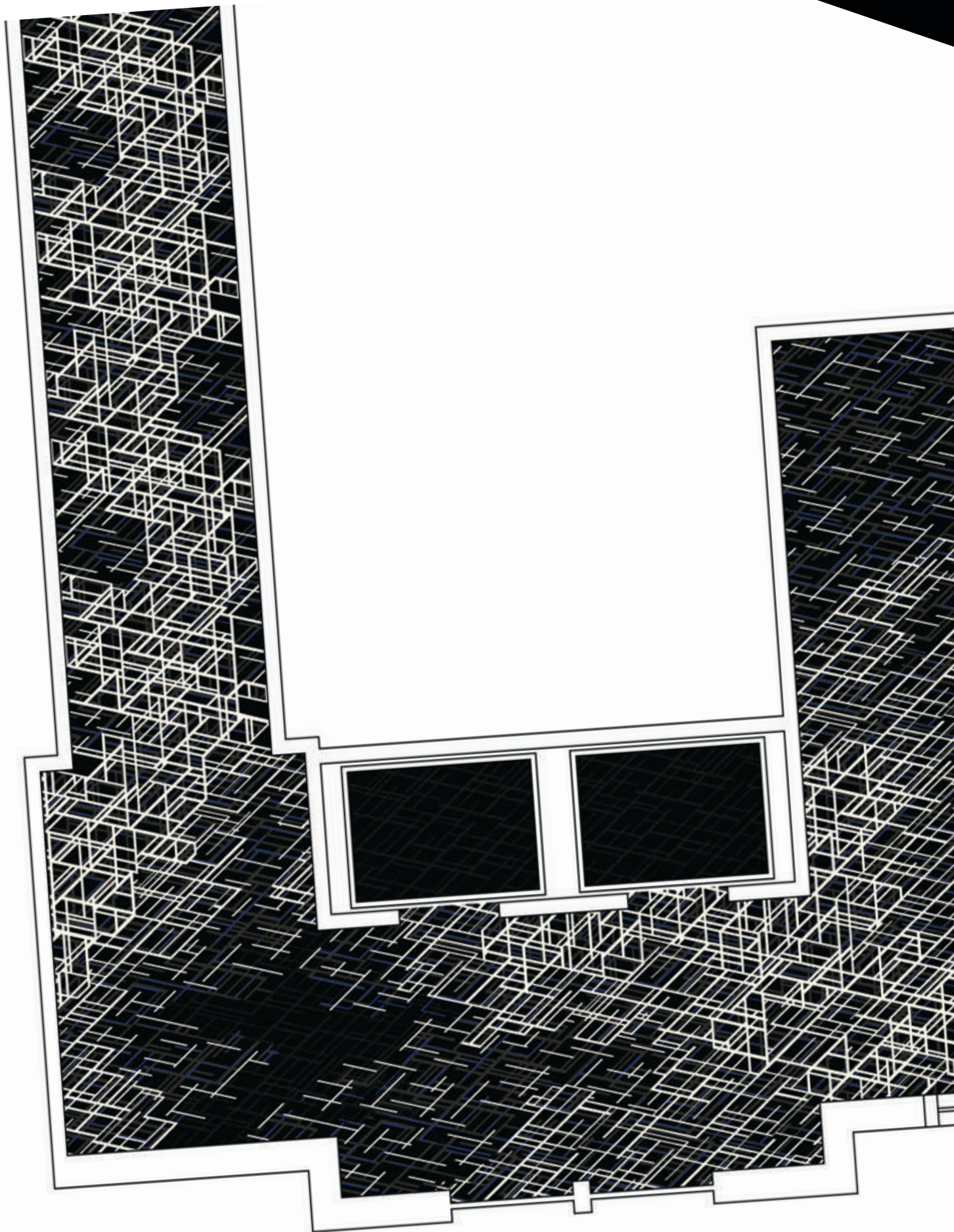
rug YR03020



SIZE: 6' X 9'

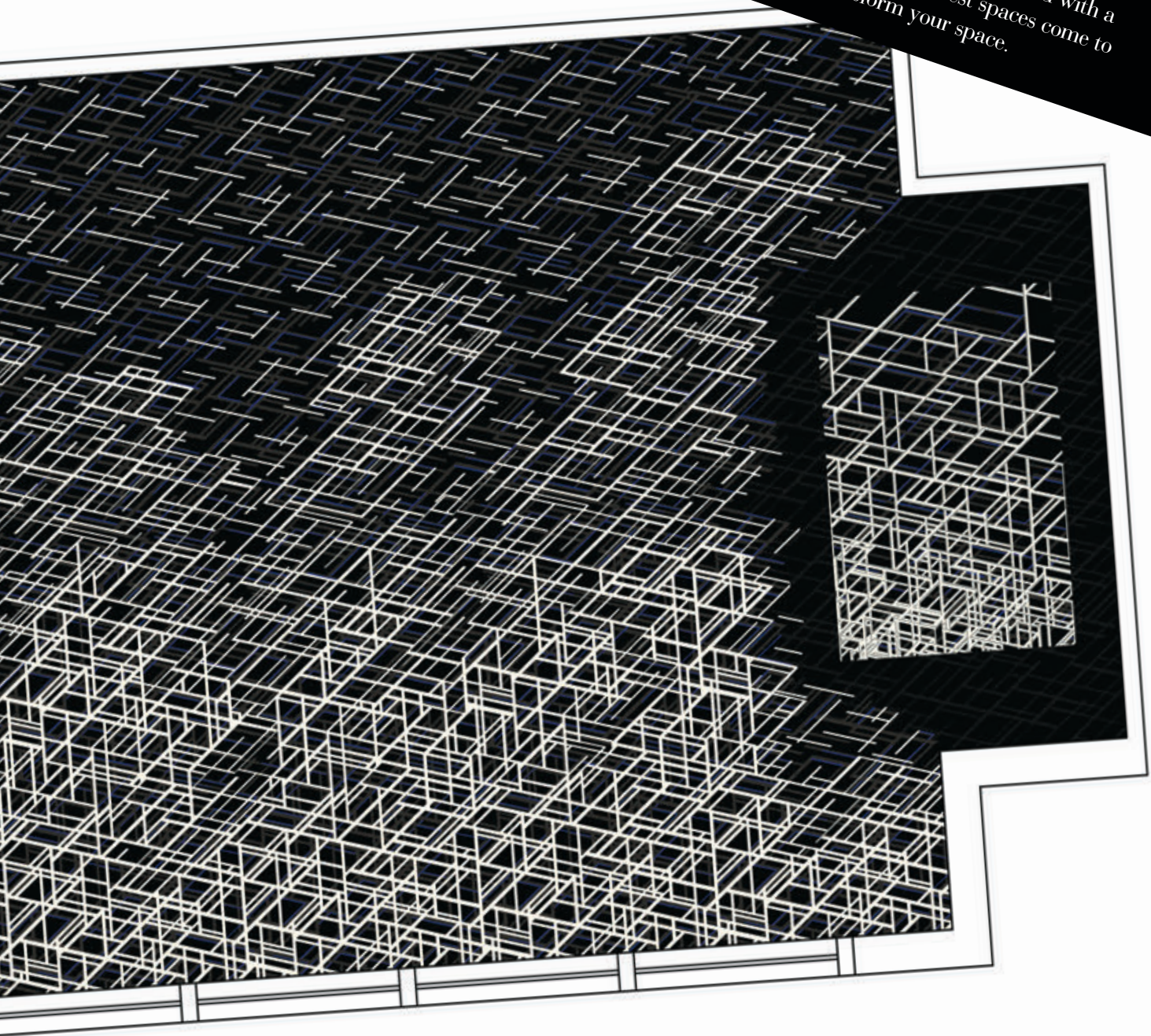
A	B	C	D	E
5221D cut	6025 cut	5223D cut	5790D loop	5829D loop





POWER PLAY

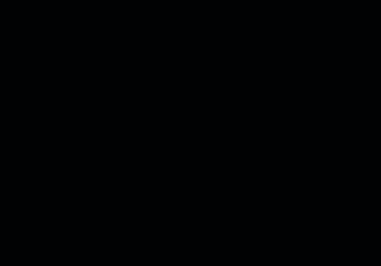
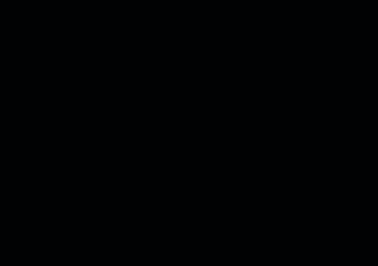
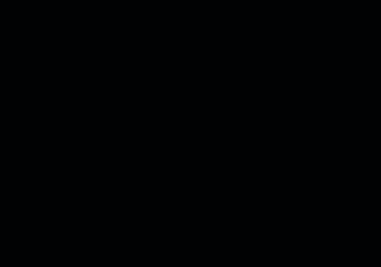
A dramatic play between light and shadow, interspersed with a pop of unexpected color. And voila! Your boldest spaces come to life. Vary the mix to define and transform your space.





*BOLDLY GO WHERE NO
CARPET HAS GONE BEFORE*





IS

FEARLESS

